



# Why Dentium?

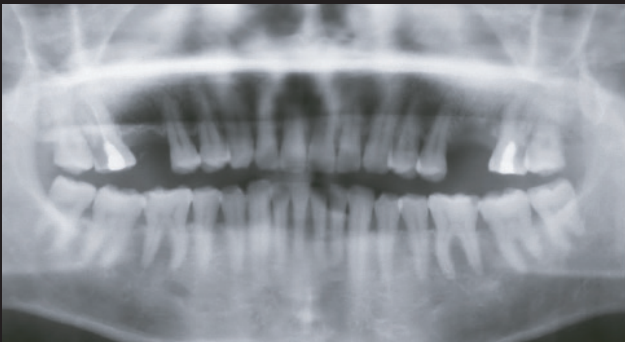
Total Catalogue

**Dentium**

**Dentium**



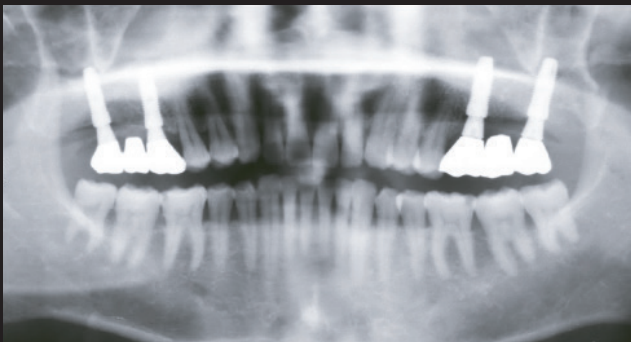
Over \_\_\_\_\_  
**22** Years  
of Long  
Term Data



**Pre-op** 2001.11.10



**Implantation** 2001.11.28



**Final prosthesis** 2002.05.19

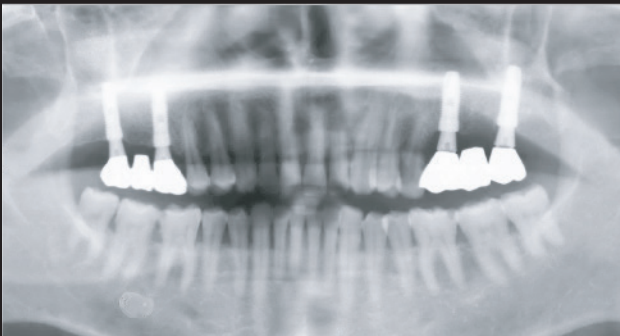
## Simple yet Predictable

22 years of Consistent Implant Design with S.L.A. (Sandblasting with Large Grid & Acid Etching)  
Proven Study of Excellent Bone-to-Implant Contact (BIC)

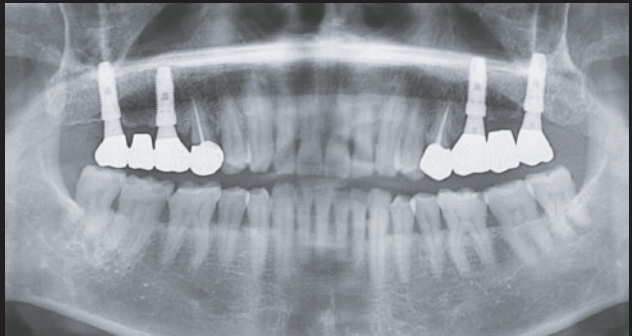
*Reference: Myron Nevins, DDS, et al., Clinical & Histological Evaluations of SLA Dental Implants  
Int J Periodontics Restorative Dent 2017;37:175-181. doi:10.11607/prd.3131*

# Dentium

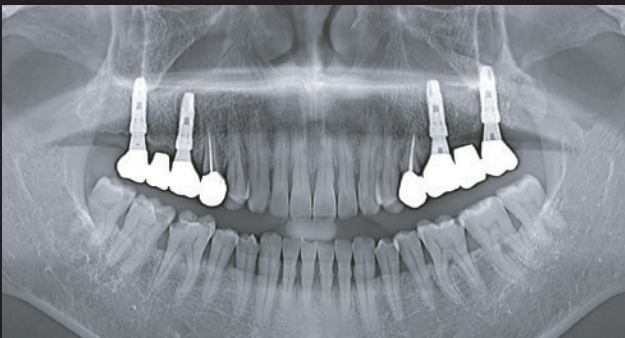
## Long Term Clinical Data



**4 Year Follow-up 2005.05.23**



**11 Year Follow-up 2013.01.17**



**20 Year Follow-up 2021.04.14**

## Efficiency through Simplicity

One Prosthetic Connection for all Dentium (Implantium & SuperLine) Implant System  
One Abutment Screw Fits All Dentium (Implantium & SuperLine) Abutments & Fixture Platform

# About Us

---

Founded in June 2000, Dentium Co., Ltd. is a global leader in dental medical devices, specializing in the production of high-quality implant products. Established by a team of expert dentists and professionals with extensive clinical experience, Dentium has grown to be a trusted name in the dental field, with a reputation for excellence and innovation. With a focus on providing innovative dental solutions, Dentium has achieved widespread recognition in over 80 countries across Europe, China, Russia, the Middle East, Asia, and Central and South America.

Guided by our motto, “Total Solution Provider & Self-Development Manufacturer,” Dentium strives to be a leader in the dental industry. Our aim is to create an integrated implant system, incorporating cutting-edge dental implants, biomaterials, and digital medical devices, all supported by differentiated technologies.

At the heart of Dentium's success is the Dentium R&D Center, which is equipped with state-of-the-art facilities for ensuring product stability and validity. Our R&D efforts are further enhanced by collaborations with leading universities and specialized research institutes around the world.

Dentium is committed to revolutionizing the field of dentistry by providing high-quality, innovative dental implant solutions. Our mission is to empower dental professionals globally with the tools and knowledge they need to deliver superior patient care and achieve optimal treatment outcomes. With over 20 years of clinical data supporting our products, we continue to drive technological advancements and education in the field, ensuring that our solutions enhance oral health and transform smiles worldwide.

Headquartered in Seoul, South Korea, Dentium is publicly listed on the KOSPI, reflecting our strong financial standing and commitment to continued growth.



# Our Story



## Trusted Dentium

Built to add lasting value through **10 processes, 10 pre-inspections, and 100% in-house production.**



## Dentium in Research

Dentium's R&D Center is the hub for groundbreaking innovation and industry-leading advancements



## Dentium Takes on the Challenge

With a presence in over 80 countries, Dentium is shaping the future of global dentistry.

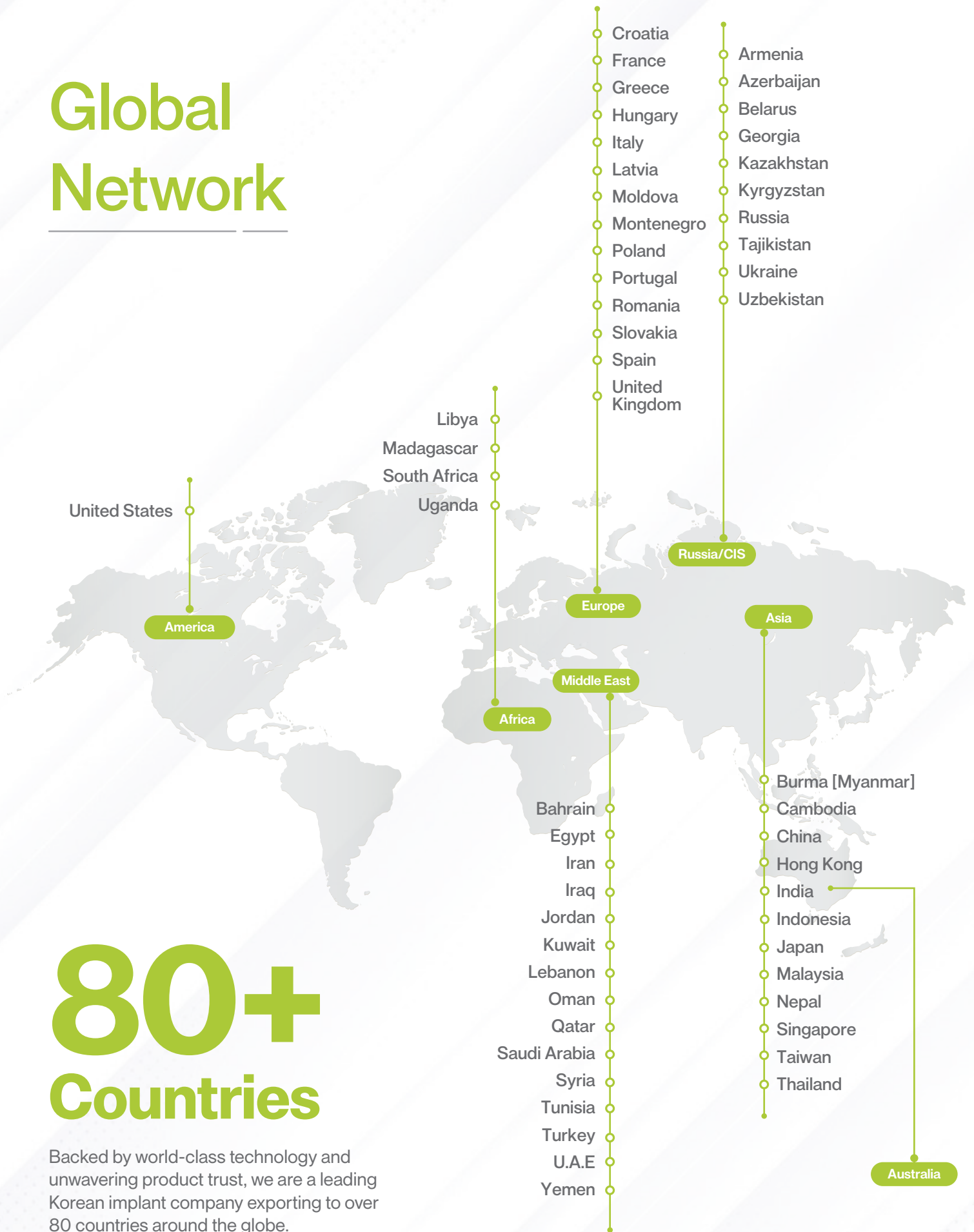
# Dentium

Total Solution Provider

# Global Network

## 80+ Countries

Backed by world-class technology and unwavering product trust, we are a leading Korean implant company exporting to over 80 countries around the globe.



# Contents

bright Implants .....	10
bright Surgical Lindemann Kit .....	16
bright Guide Lindemann Kit .....	17
bright Digital Guide Kit .....	18
SuperLine 2 .....	19
Implantium 2 .....	22
SuperLine Stopper Drill Full Kit (UXSF) .....	25
Digital Guide Full Kit .....	26
Help Kit (XIH) .....	27
DASK Simple .....	28
DASK .....	31
bright CT .....	32
rainbow 3D Viewer .....	36
rainbow CT .....	40
Digital Guide Software .....	47
iCT Wireless Motor .....	50
The Trust .....	53
brigh Chair 2 .....	55
bright X Ray Portable .....	57

Bluemoon .....	59
Painless .....	62
Osteon III .....	64
Osteon III Collagen .....	65
Osteon Xeno .....	66
Osteon Xeno Collagen .....	67
Collagen Membrane 2 .....	68
Colagen Graft 2 .....	69
bright Resin .....	70



**Dentium**

Precision-Crafted Implants

# for Lasting Smiles

---



**B**one Level



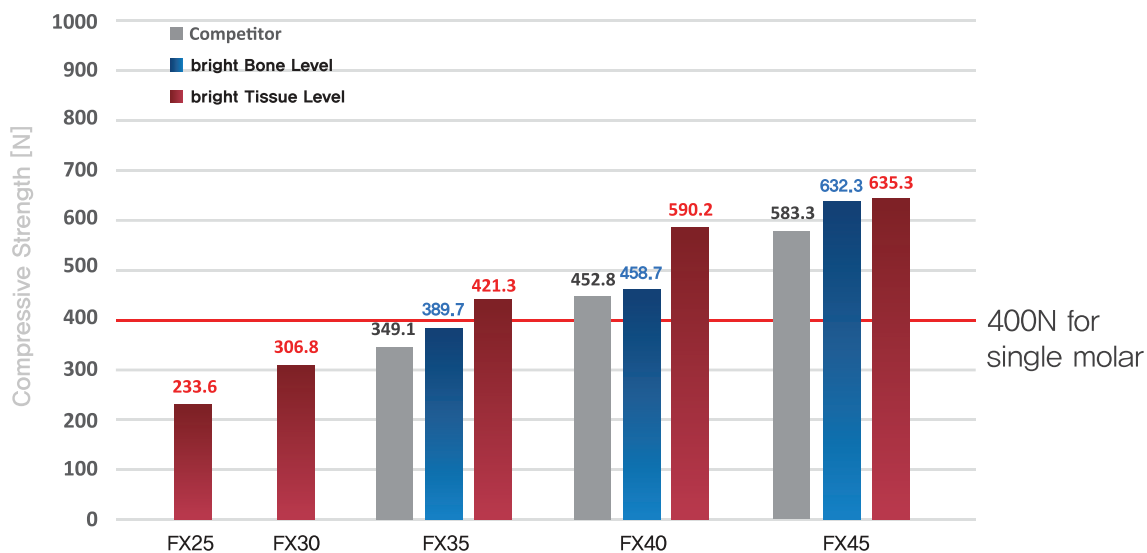
**T**issue Level

# Tissue Level

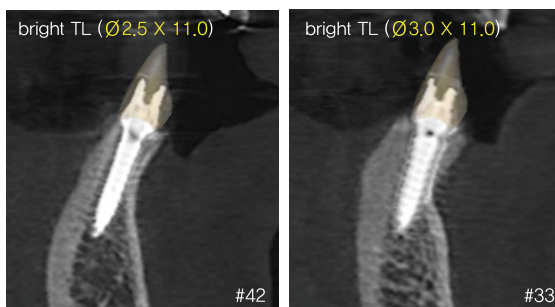


## High Compressive Strength

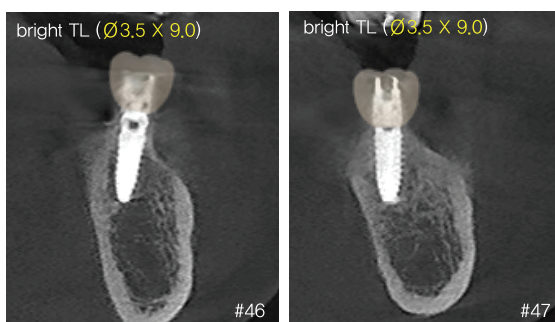
Small diameter implant without concern for fracturing



※ Caution: heavy bruxer or hard food bite



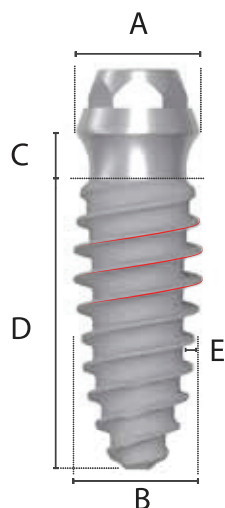
Ø2.0, 2.5, 3.0 implant  
can be used to  
anterior narrow ridge



Ø3.5 implant  
can be used to  
molar area

# Tissue Level Fixture Specifications








• Cover screw is not included in the package



## Common Feature

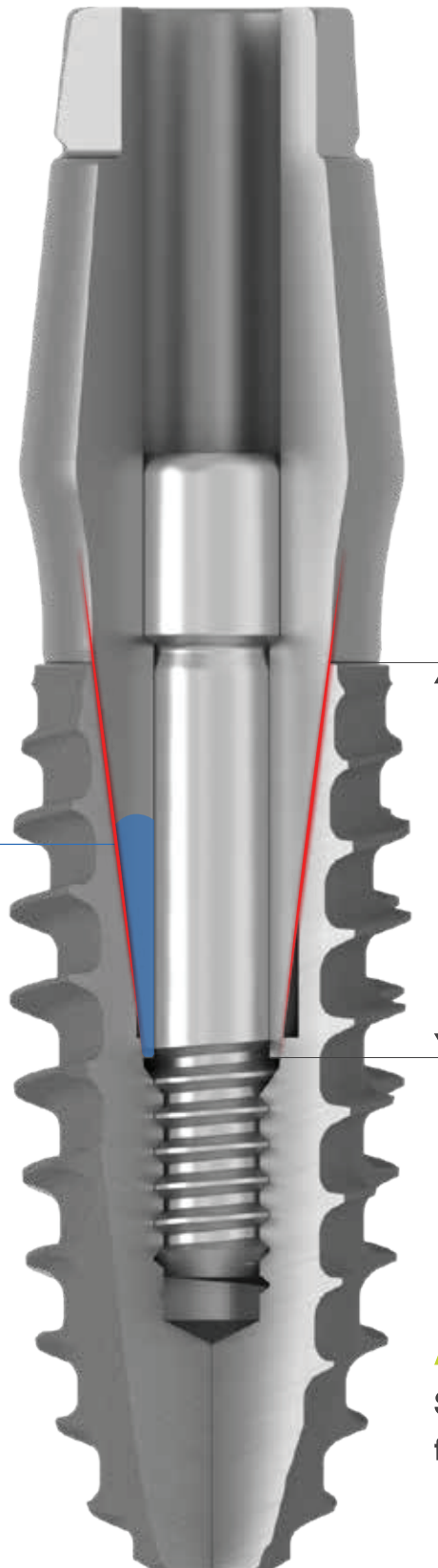
- Single Platform (Ø3.8mm)
- Gingival Height : 1.5mm
- Mountless Type

Unit: mm

Cap Color		      						
		Pink	Sky blue	Gray	Yellow	Green	Blue	Red
A	Platform Diameter	3.8						
B	Body Diameter	2.0	2.5	3.0	3.5	4.0	4.5	5.0
C	Gingival Height	1.5						
D	Thread Length	7.0 / 9.0 / 11.0 / 13.0 / 15.0						
E	Thread Depth	0.15	0.30	0.45	0.50	0.55	0.60	0.60

# Bone Level

**10°**  
**Morse Taper**  
Strong connection  
to prevent  
screw loosening



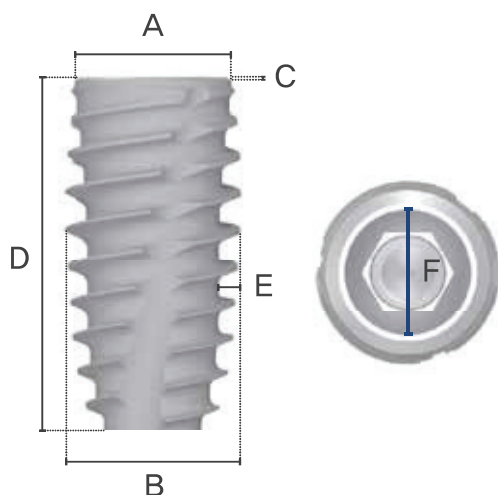
**3.7mm**  
**Deep Connection**  
Effective stress distribution



**Aggressive Thread**  
Strong initial stability  
for early bone application

# Bone Level Fixture Specifications






• Cover screw is not included in the package



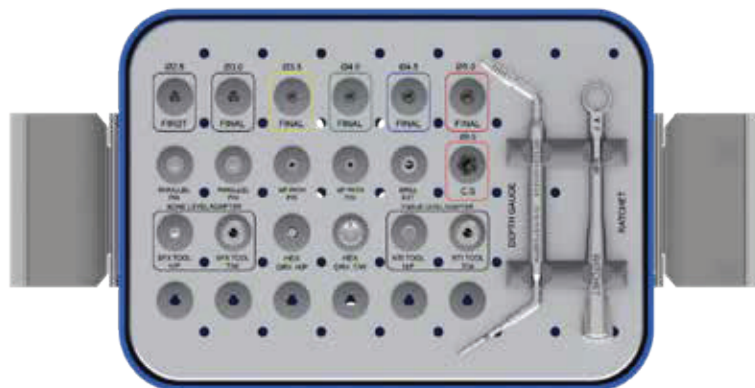
## Common Feature

- Internal Morse Taper (10°)
- Abutment Interface : 3.3mm
- Mountless Type

Unit: mm

Cap Color						
		Yellow	Green	Blue	Red	Orange
A	Platform Diameter	3.5	3.8	4.3	4.8	6.0
B	Body Diameter	3.7	4.0	4.5	5.0	5.0
C	Bevel Height	0	0.06	2.0 0.20	0.32	0.66
D	Total Length	7.0 / 9.0 / 11.0 / 13.0 / 15.0				
E	Thread Depth	0.35	0.40	0.45	0.50	0.50
F	Abutment Interface	3.3				

# Surgical Lindemann Kit



Kit Includes

BSLK

## Guide Drill



BGD2533



BFD3033



BFLD3533



BFLD4033



BFLD4533



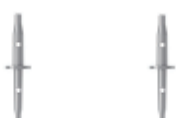
BFLD5033



BCS6027L

## Final Drill

## Parallel Pin



BPP164325

## Path Pin



BFPP

## Drill Extension



BDE

## Depth Gauge Ratchet



BDG

BRCT

## Bone Level Adapter



BFA30H

BFA26W

## Hex Driver



BHD25H

BHD25W

## Tissue Level Adapter

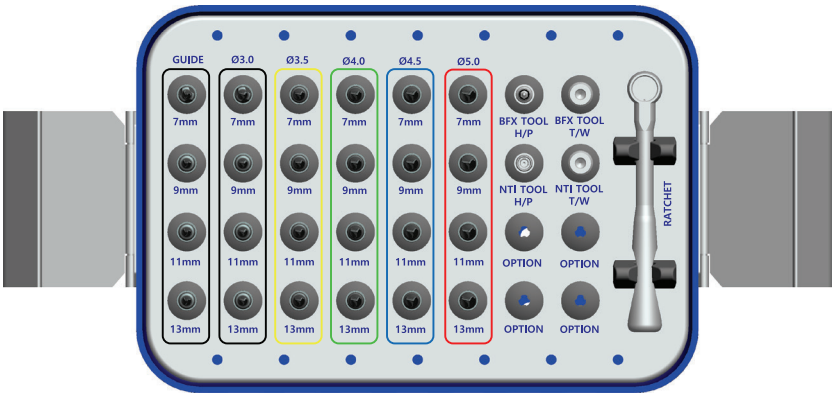


BSA3824H

BSA3824W



# Guide Lindemann Kit



※ Efficient drilling design for apical & lateral grinding

## Kit Includes

BGLK

### Guide Drill



### FX30 Final Drill



### FX35 Final Drill



### Ratchet



BRCT

### FX40 Final Drill



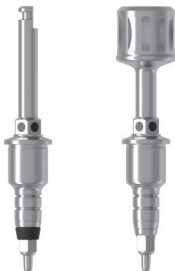
### FX45 Final Drill



### FX50 Final Drill

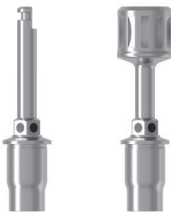


### Bone Level Fixture Adapter



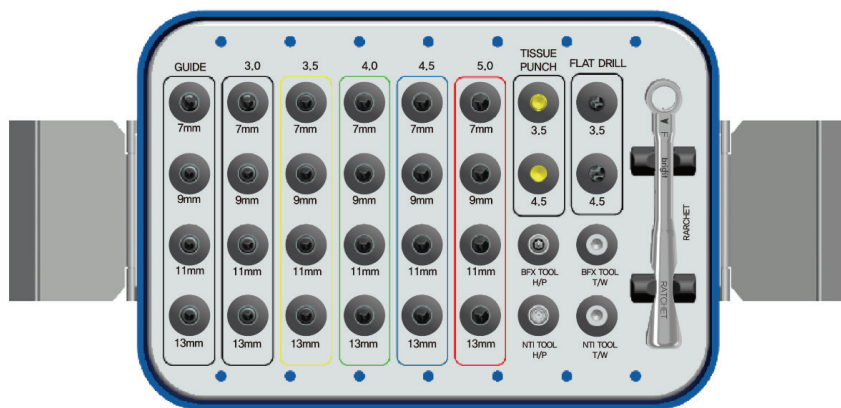
BFFA 28H BFFA 28W

### Tissue Level Fixture Adapter



BFSA 25H BFSA 25W

# Digital Guide Kit



## Kit Includes

BGSK

### Guide Drill



BFGD 2507 BFGD 2509 BFGD 2511 BFGD 2513

### FX30 Final Drill



BFFD 3007 BFFD 3009 BFFD 3011 BFFD 3013

### FX35 Final Drill



BFFD 3507 BFFD 3509 BFFD 3511 BFFD 3513

### Ratchet



### FX40 Final Drill



BFFD 4007 BFFD 4009 BFFD 4011 BFFD 4013

### FX45 Final Drill



BFFD 4507 BFFD 4509 BFFD 4511 BFFD 4513

### FX50 Final Drill



BFFD 5007 BFFD 5009 BFFD 5011 BFFD 5013

### Tissue Punch



### Flat Drill



### Bone Level Fixture Adapter



### Tissue Level Fixture Adapter



# ***Super*Lr̃ne II**

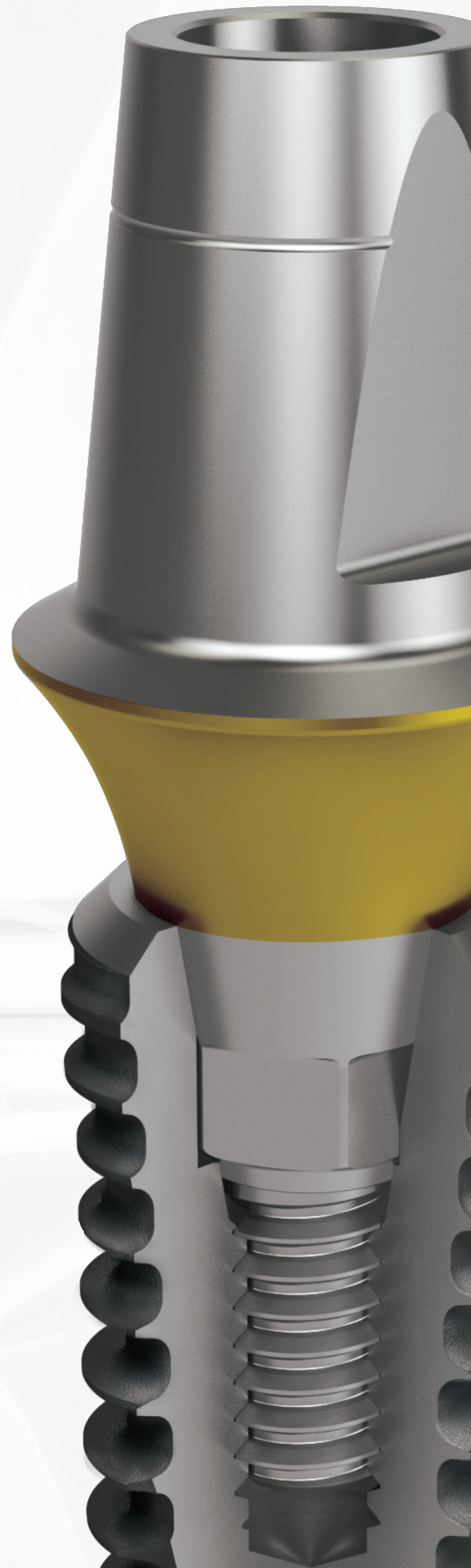
*Simplicity through Sophistication*

## Simplicity through **Sophistication**

---

- A single connection across all diameters with increased implant wall thickness.
- One analog for simple restoration process and inventory management

***Super*Lr̃ne**





# SuperLine II

Simplicity through Sophistication

## S.L.A. (Sandblasted with Large grits and Acid etched) Surface Treatment

Well documented and clinically proven surface technology.



Myron Nevins et al. :

*"Clinical and Histologic Evaluations of SLA Dental implants"*

*The International Journal of Periodontics & Restorative Dentistry*  
2017 37:175-181. doi: 10.11607/prd.3131

## Platform-Switched Design with Conical Connection

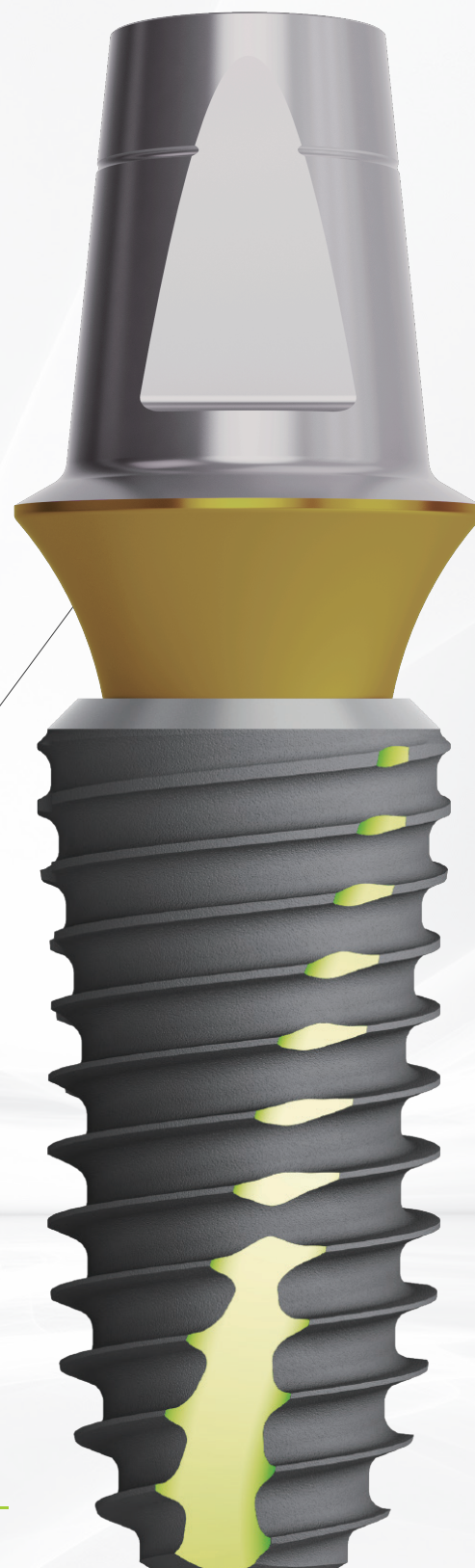
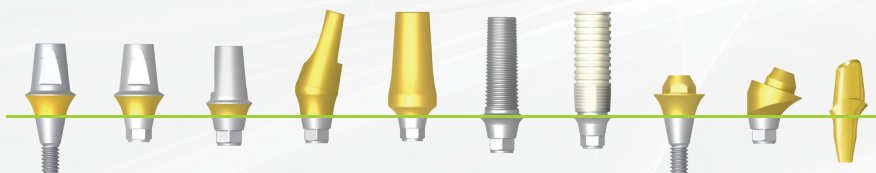
*"Ref. Comparison of Clinical and Radiographic Outcomes of  
Platform-Switched Implants with a Rough Collar and Platform-Matched  
Implants with a Smooth Collar: A 1-Year Randomized Clinical Trial."*

*Int J Oral Maxillofac Implants*

2016;31:382-390. Doi: 10.11607/jomi.4189

## Uniform Prosthetic Platform

- Single prosthetic platform across all diameters of implants
- One abutment screw fits all abutments and implant platforms
- One Hex screw driver fits all abutment screws
- All implant diameters share the same conical connection
- All implant diameters share an internal hex for indexation



SuperLine

## Double Thread & Tapered Design



- Double threaded tapered body design may provide better success rate in immediate loading cases.

## Deeper and Sharper Thread Design

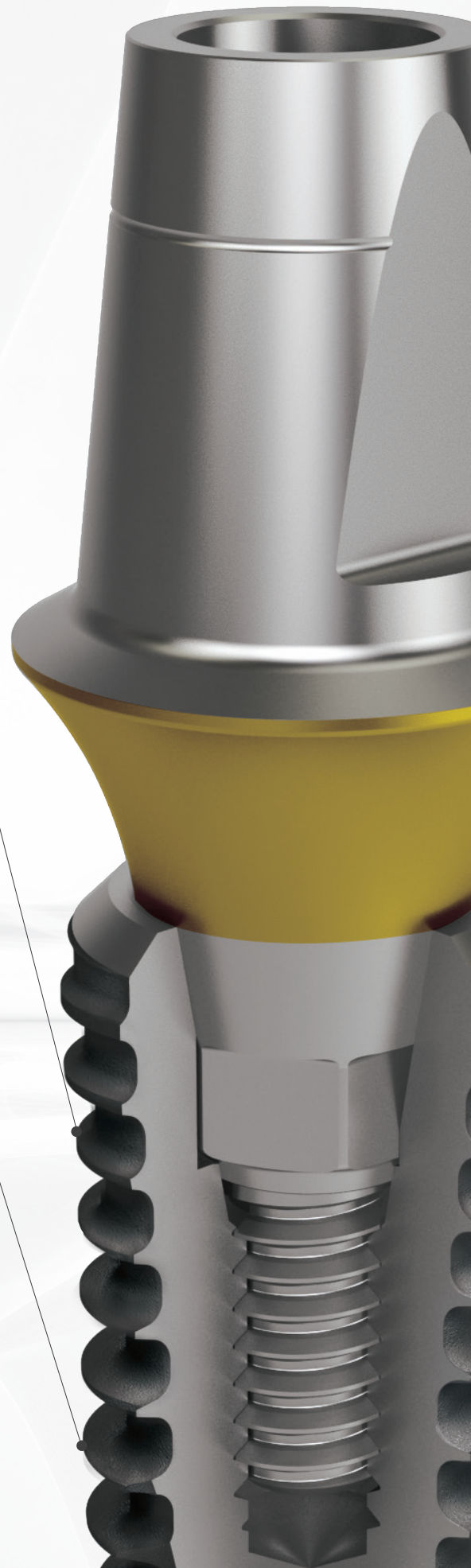
- Enhancing primary stability.

## Efficient Implant Placement in all Bone Types

- A long cutting edge and new thread design



**Super**Lr<sup>ne</sup>



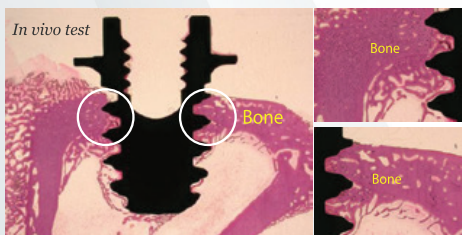


# IMPLANTIUM II



## CaP Coating

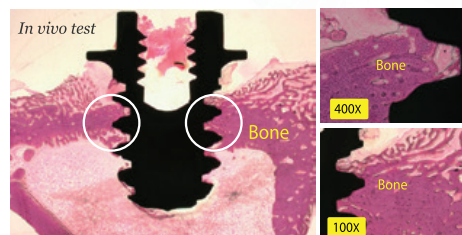
- Allows faster rate of cell adhesion
- Achieve primary stability of surrounding bone earlier after initial implant placement



The application of a thin film of CaP on S.L.A. surface yielded better results in osseointegration during vivo test

## S.L.A. Surface

- Proven surface treatment with over 10 years of long-term clinical data
- Clinically yields excellent bone response



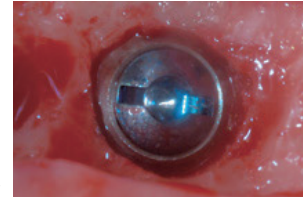
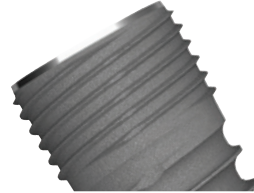
# Implantium II Characteristics

## A Extended Cutting Edge



- Improved self-tapping ability
- Allows more control over the depth of fixture placement
- Alleviates the occurrence of over-torque during placement in dense bone

## B Bacteria Resistant Bevel



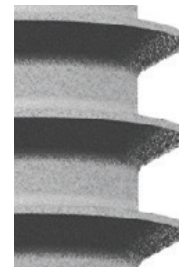
- The tapered bevel platform design may make bone profiling unnecessary at 1st, 2nd surgery.

## C Biological Connection



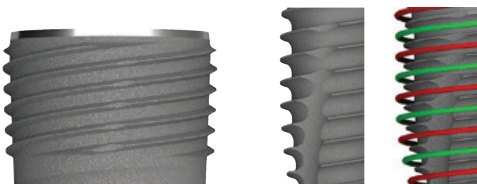
- The conical hex connection between implant and abutment interface ensures hermetic sealing.
- The biologic connection distributes the load to the fixture evenly. Therefore it helps minimize micro-movement and marginal bone loss.
- All implant diameters share the same internal hex.

## D Excellent Bone to Implant Contact (BIC)



- Thread platform design creates excellent bone to implant contact.
- Threads engage and penetrate bone with ease.

## E Quadruple & Double thread Design



- Chair time decreased through faster fixture placement

## F Optimal Fixation Threads

- Greater advantage for Immediate and Early Loading
- Enhanced initial stability through longer and sharper threading










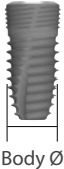

## G Maintained Compatibility

- Prosthetic components and Surgical Kit 100% compatible with the existing Implantium II Implant System

# Implantium II Color Coding by Diameter

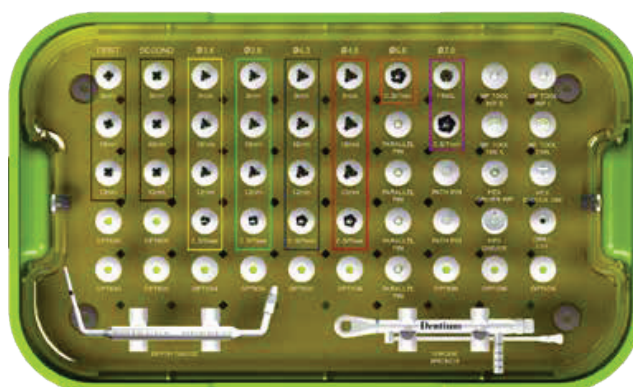
• Cover screw is not included.

(Unit: mm)

Cap Color					
		Yellow	Green	Blue	Red
Fixture Implantium II (Mount Free)					
	Fixture Platform Diameter	3.7	4.0	4.5	5.0
	Fixture Body Diameter	3.6	4.0	4.5	5.0
	Fixture Bevel Height	0.2	0.1	0.3	0.4



# Surgical Kit [Stopper Drill Full]



## Kit Includes

## UXSF

### First Guide Drill



XLD2208S

### Second Guide Drill



XLD2608S

### Final Drill



XFD3408S



XFD3808S



XFD4308S



XFD4808S

### Hand-piece Adapter



XFD5831



XFA27H



XFA32H



XLD2210S



XLD2610S



XFD3410S



XFD3810S



XFD4310S



XFD4810S

### Ratchet Adapter



XFA26W



XFA32W



XLD2212S



XLD2612S



XFD3412S



XFC3812S



XFD4312S



XFD4812S

### HexDriver Drill Extension



XHD26T



XDE

### Parallel Pin



XPP162220 T



XFC3607



XFC4007



XFC4507



XFC5007



XFC6007



XFC7007

### Hand-piece Ratchet



XHD25H



XHD25W

### MF Path Pin



XMFP2

### Depth Gauge



XDGL

### Torque Wrench



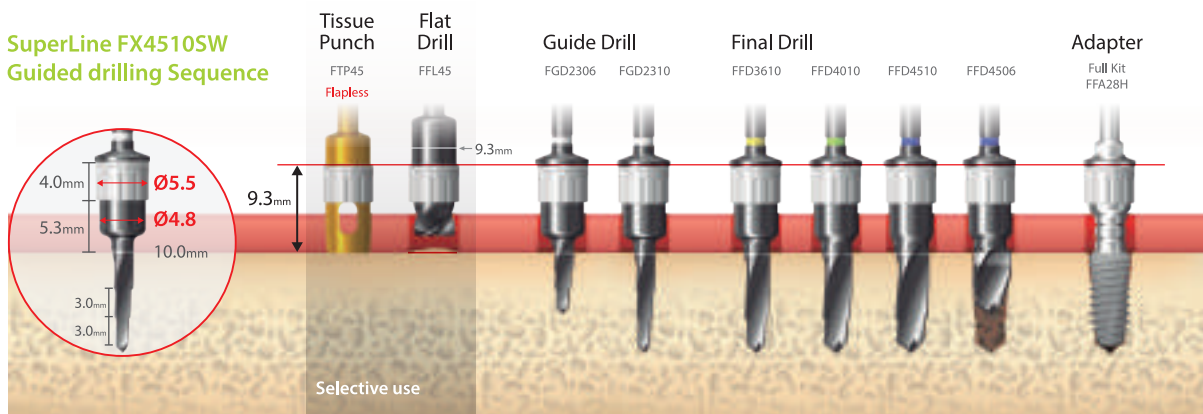
XNTW

# Full Kit

- For Ø36, Ø40, Ø45 Fixture
- Hybrid design for 6mm Final drill & Countersink



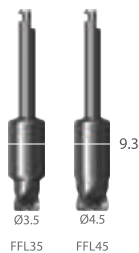
## SuperLine FX4510SW Guided drilling Sequence



### Tissue Punch



### Flat Drill



### Fixture Adapter



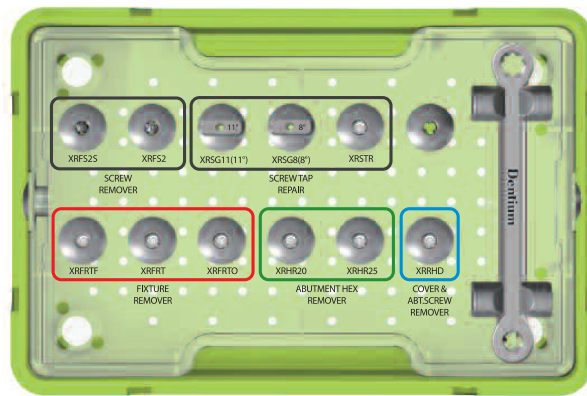
### Ti-Sleeve



### Ratchet



# Help Kit



### Kit Includes

XIH

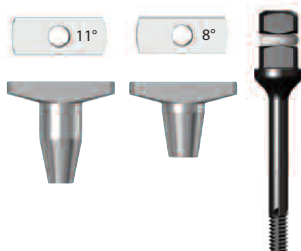
## Screw Remover



## Abutment Hex Remover



## Screw Tap Repair



## Fixture Remover



## Cover & Abutment Screw Remover



# Minimalism in Sinus

Easy and Safe / Shorter Chairside Time

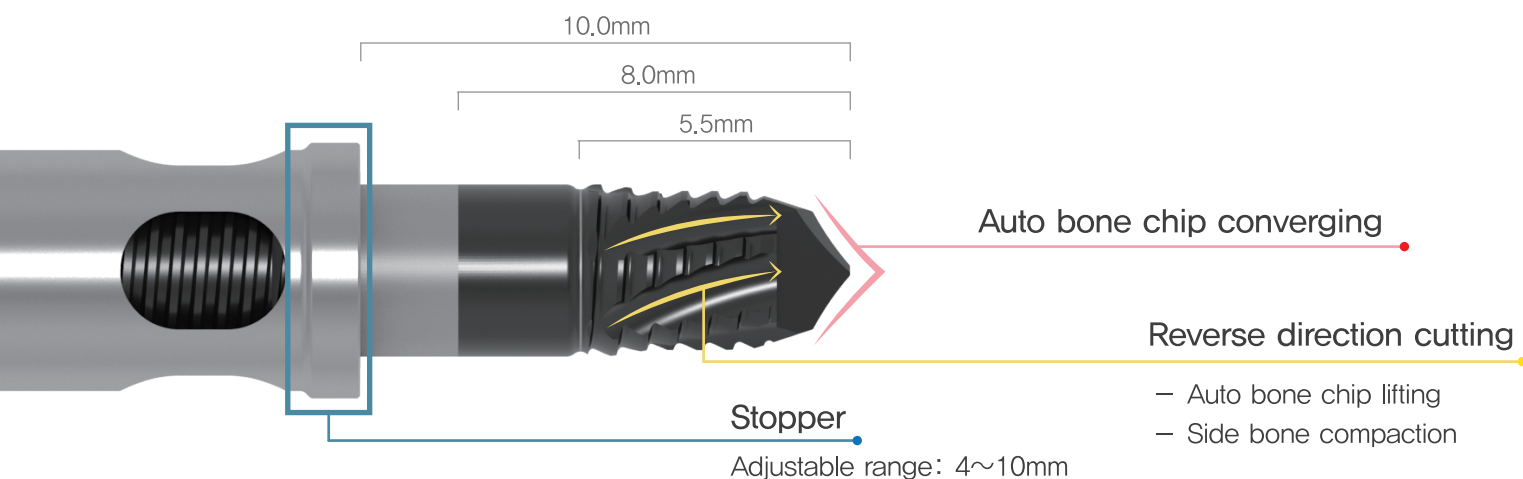
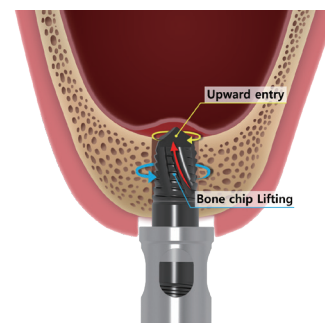
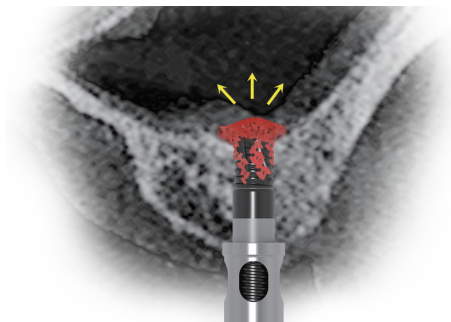


# DASK *Simple*

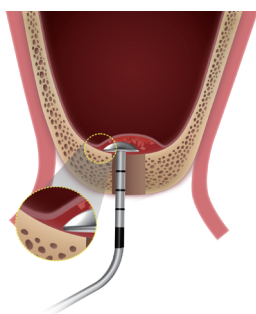
# Bone Compaction

Safe membrane elevation

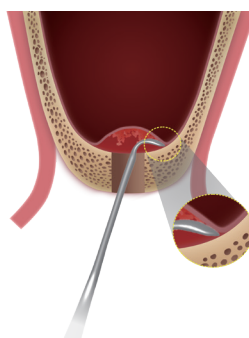
50rpm 70N cm  
Non irrigation



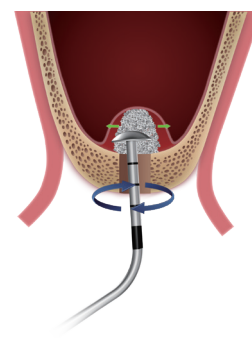
Detaching



Sinus Lifting



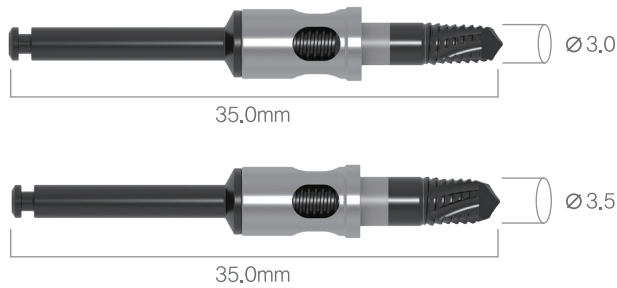
Round Instrument





# Specification

## Compaction Drill



Top view

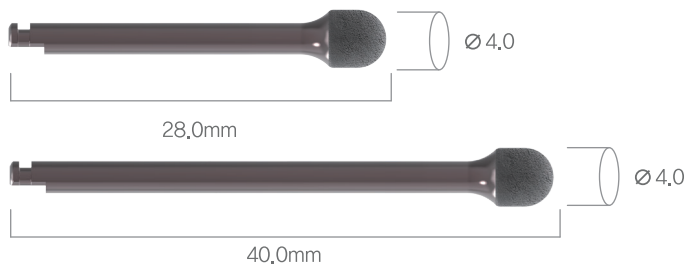


Diameter  
Ø 3,0

※ Drills to be replaced after 50 uses

Diameter	L	Art. No
Ø 3,0	35,0mm	SRT3035AS
Ø 3,5	35,0mm	SRT3535AS

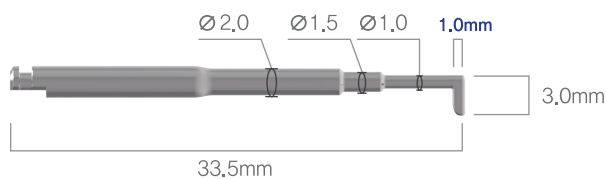
## Lateral Drill



※ Drills to be replaced after 50 uses

Diameter	L	Art. No
Ø 4,0	28,0mm	SLD0428
Ø 4,0	40,0mm	SLD0440

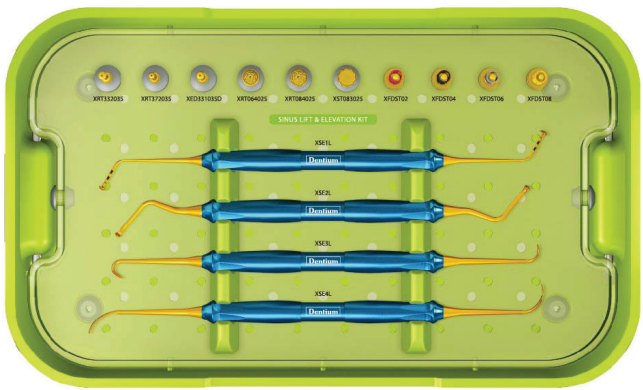
## Bone Spreader



Diameter	L	Art. No
Ø 5,0	33,5mm	SSP33



# Dentium Advanced Sinus Kit



Kit Includes

DASK

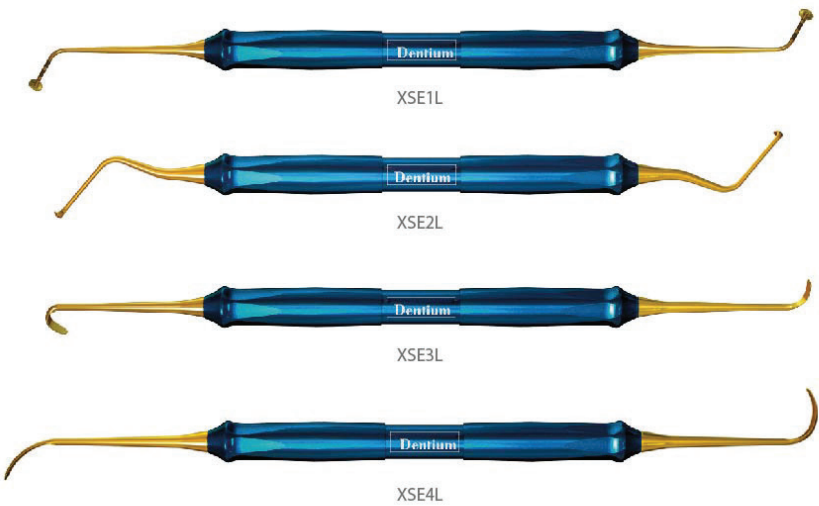
DASK Drill



Stopper



Sinus Elevation Instrument



# A Highly Adaptable CBCT System

---



## Powerful AI

Eliminate your routine burdens with our AI

## MAR Plus

Improved metal artifact reduction feature

## Multiple FOV

With up to 5 fields of view, it covers all clinical needs for implants.

## Low Dose

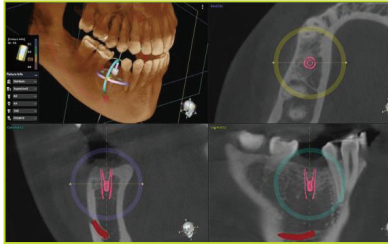
A Dose Reduction Mode optimizes the intensity of the X-rays which lowers exposure for easily penetrated tissues.

**bright CT**



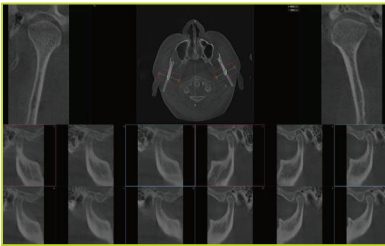
# Intelligent Dentium AI Software,

**Bright CT** is a crucial tool for treatment planning and post-procedure monitoring.



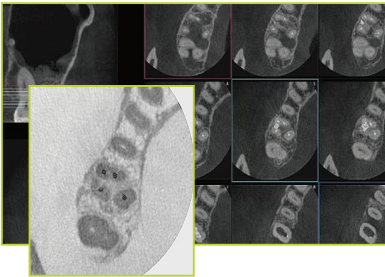
## Implant Planning

Dentium AI automatically detects the position of the missing teeth and sets the initial position of fixture and crown to minimize implant planning.



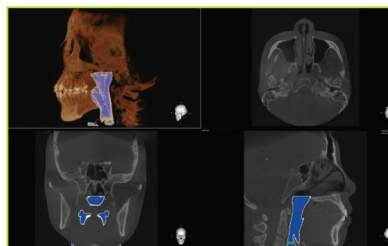
## TMJ

Symmetry view provides a cross-sectional image of the temporomandibular joint area for bilateral TMJ diagnosis.



## Endodontics

Endo mode provides with a maximum resolution of 80µm. Invert (Positive/Negative) diagnostic mode helps identify more accurate images.



## Airway Analysis

Airway module allows users to easily segment the airway in just a few clicks.

# Right Image at the Right Dose

**bright CT** is a versatile CBCT system featuring the broadest range of fields of view in its category, ideal for practices that want to expand their treatment capabilities.

## Multiple FOV

With up to 5 fields of view, it covers all clinical needs for implants, periodontal, endodontic and orthodontic procedures, as well as oral surgery and airway analysis.



**22 x 20 cm (4T)**  
Maxillofacial  
zygomatic implants



**17.5 x 9.5 cm**  
Full arch  
with 3<sup>rd</sup> molar



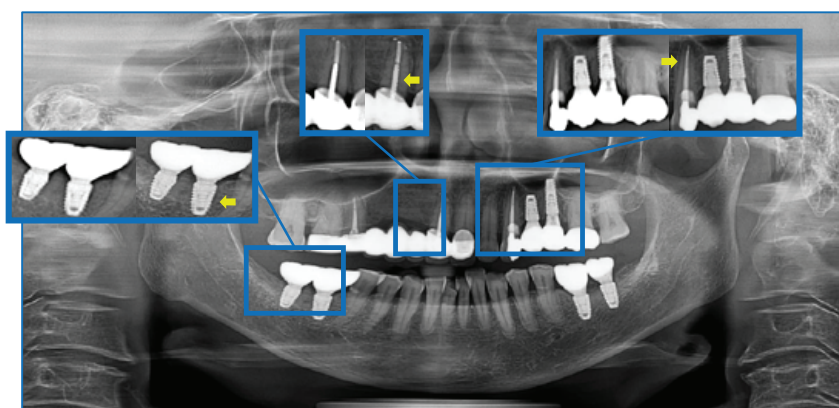
**12.5 x 9.5 cm**  
Standard



**5 x 5 cm**  
Local  
Endodontics

## Crystal Clear Panoramic

With multi-layered technology, multiple images are taken, and each of those images are further segmented. The system automatically selects the best segments and compile them into one optimized panoramic image.

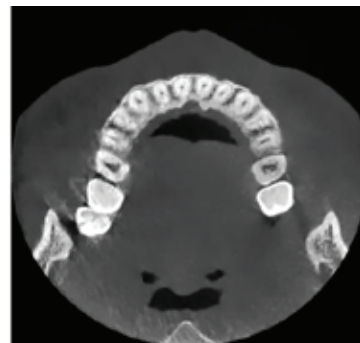


# Lower Doses Greater Quality

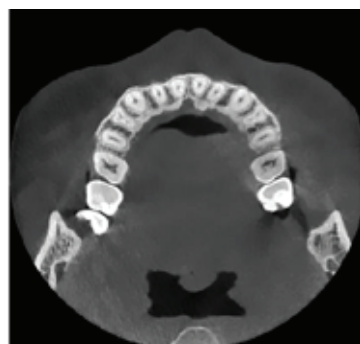
bright CT is equipped with **Metal Artifact Reduction (MAR)** algorithm to minimize streaks and dark bands caused by the presence of metal.

## Low Dose

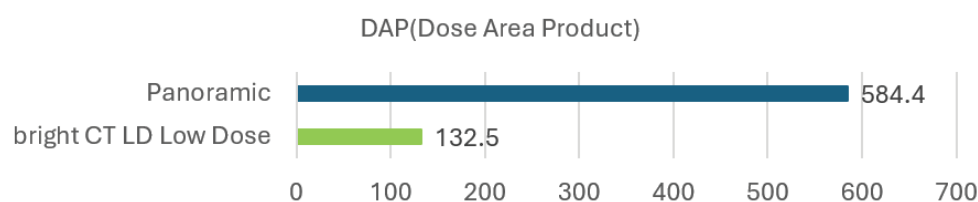
Through advanced engineering, a Dose Reduction Mode optimizes the intensity of the X-rays which lowers exposure for easily penetrated tissues.



Normal

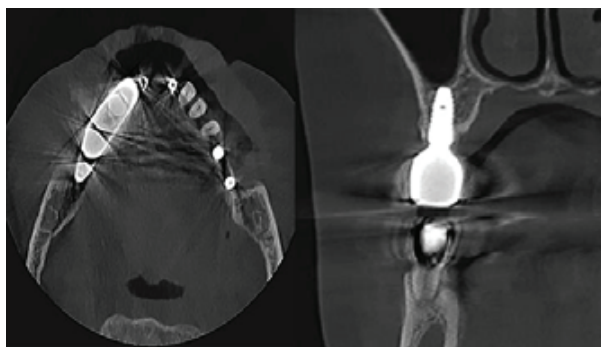


Low Dose

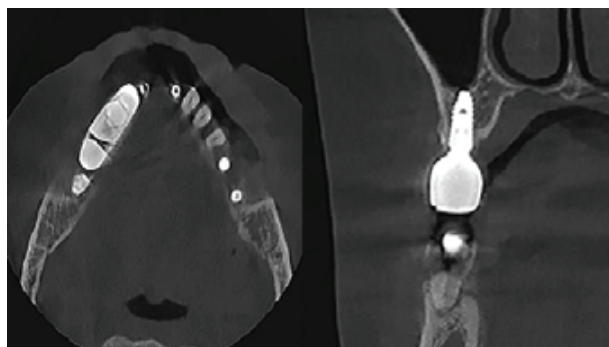


## Metal Artifact Reduction (MAR)

Game-changing Dentium MAR (Metal Artifact Reduction) with live comparison automatically reduces metal artifacts caused by implants, fillings or restoration. This helps to confirm diagnosis and reduces the risk of misinterpretation.



Without MAR



With MAR

# Seamless Insights & Precision Solution

---

Providing 2D and 3D imaging for clearer insights, intuitive controls for seamless implant predictions, and advanced reporting features for greater efficiency.

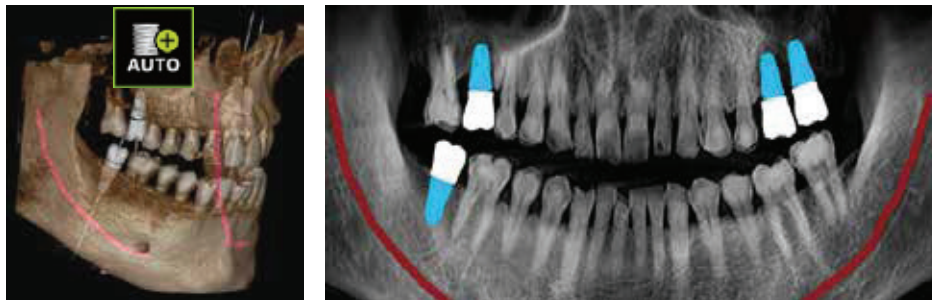


# AI-Assisted Implant Planning

Delivered with the smart Dentium AI software, bright CT is an essential tool for treatment planning and post-procedure follow-up.

## Fixture/Crown

Dentium AI automatically detects the position of the missing teeth and sets the initial position of fixture and crown to minimize implant planning time.



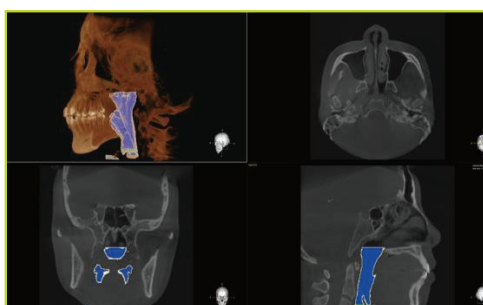
## Fixture/Crown

Dentium AI automatically detects the position of the missing teeth and sets the initial position of fixture and crown to minimize implant planning.



## Airway Analysis

Airway module allows users to easily segment the airway in just a few clicks.



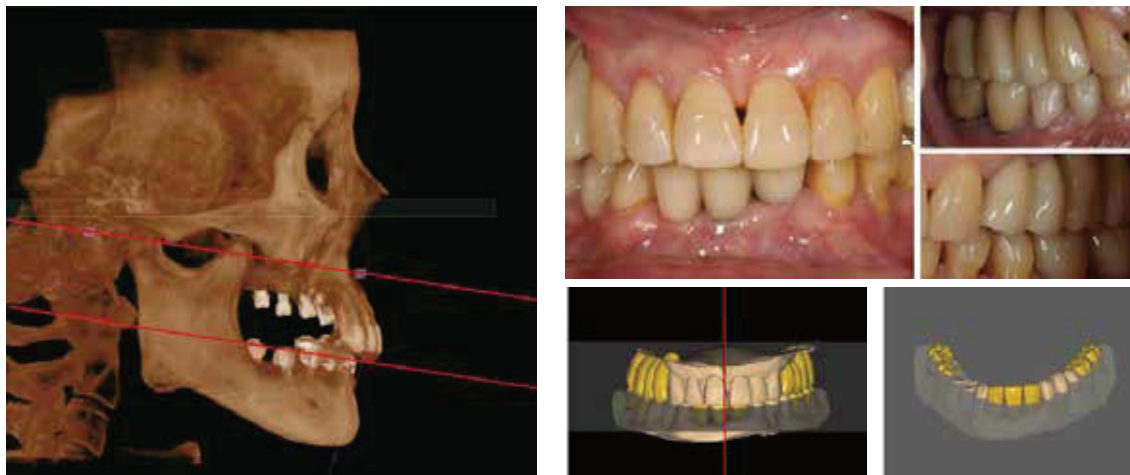


# AI-Powered CBCT Applications

Dentium-AI automatically detects the landmarks on the scanned image for orthodontic treatment.

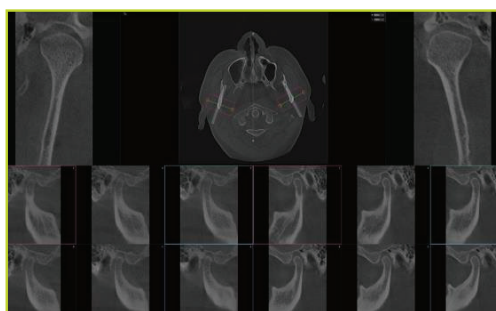
## AI Occlusal Plane

bright CT helps discover occlusal plane for an edentulous patient as an optimal reference. This feature comes with the rainbow 3D Viewer with no additional cost.



## Endodontics

Endo mode provides with a maximum resolution of 80µm. Invert (Positive/Negative) diagnostic mode helps identify more accurate images.



## TMJ

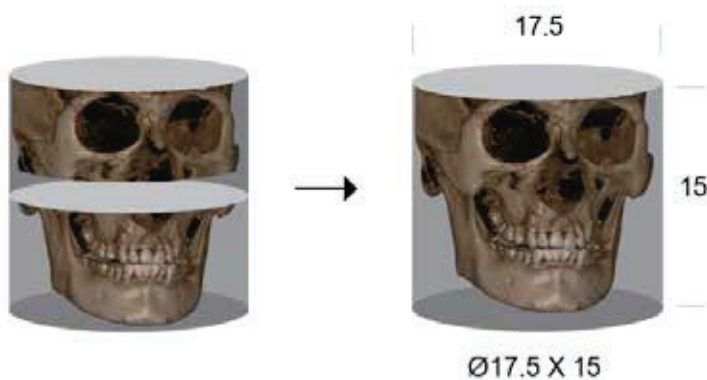
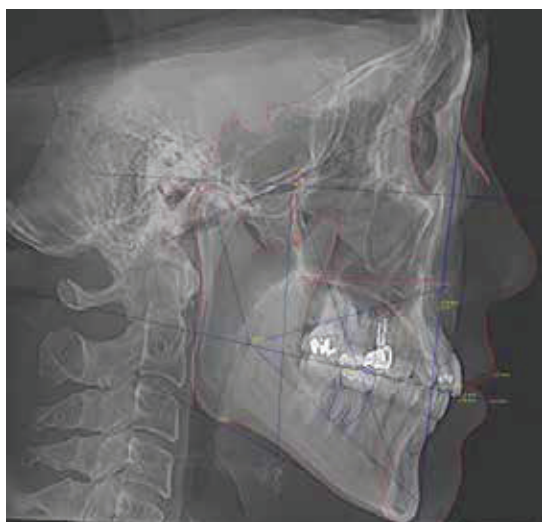
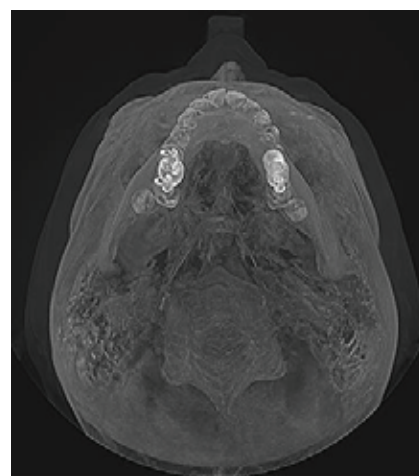
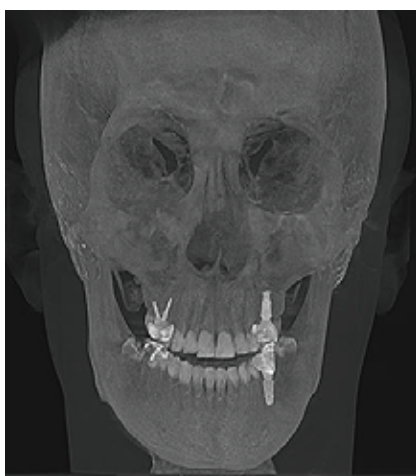
Symmetry view provides a cross-sectional image of the temporomandibular joint area for bilateral TMJ diagnosis

# The New Era of Cephalometric

Innovative image processing algorithm allows you to capture and analyze precise cephalometric images quickly and accurately.

## Virtual Ceph

bright CT enables acquiring cephalometric images without cephalometric module with the Virtual Ceph function.





# Experience the Full Spectrum of Precision

Elevating Dental Imaging with Clarity and Vibrance.

## Large FOV

Diagnosis from implant planning to orthodontics is possible with Large FOV 16x18 cm (Stitching)

## Clear Image

Due to clear image without noise and minimized blurring on anterior part, an accurate diagnosis is possible.

## Intuitive UI, Dentium Software

Due to the intuitive and easy-to-use interfaces, simulation from implant planning to orthodontics is possible.



rainbow<sup>TM</sup> CT

Total Catalogue 40

# Large & Multi FOV

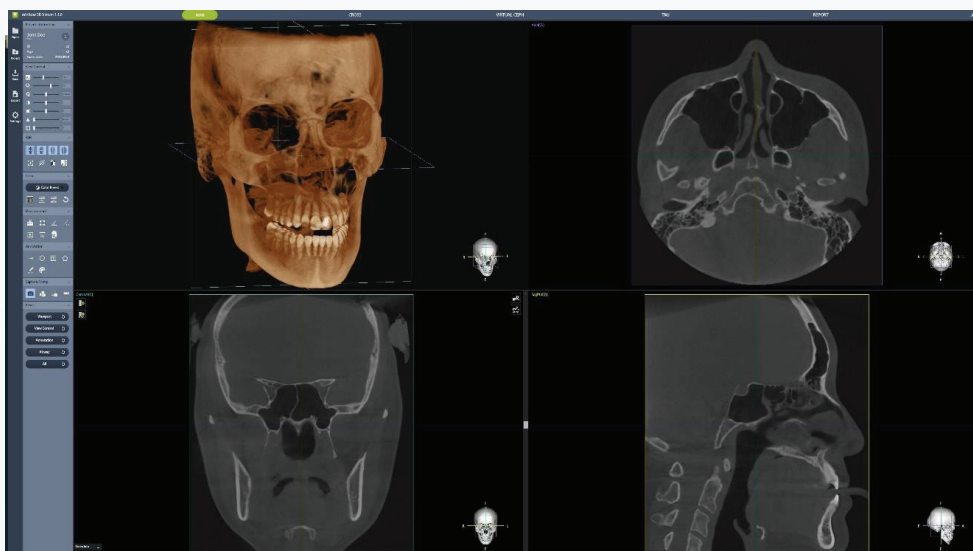
Image with no distortion of wide and clear FOV makes diagnosis from TMJ to ENT area possible.



The whole area of TMJ could be diagnosed with a basic shot. (Field of View: 16x10cm Normal)

## Stitching

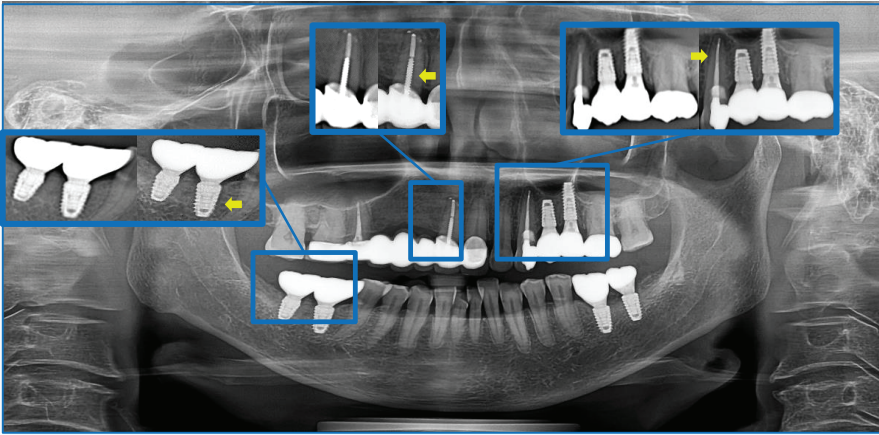
Stitching function enables the acquisition of a larger field of view (FOV) than is possible with a single conventional CT scan. By accurately superimposing two images acquired from the upper and lower halves, stitching produces a wider, clearer image, facilitating more precise diagnosis in maxillofacial surgery and orthodontics.



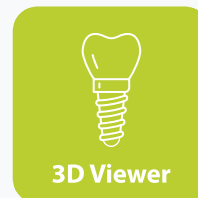
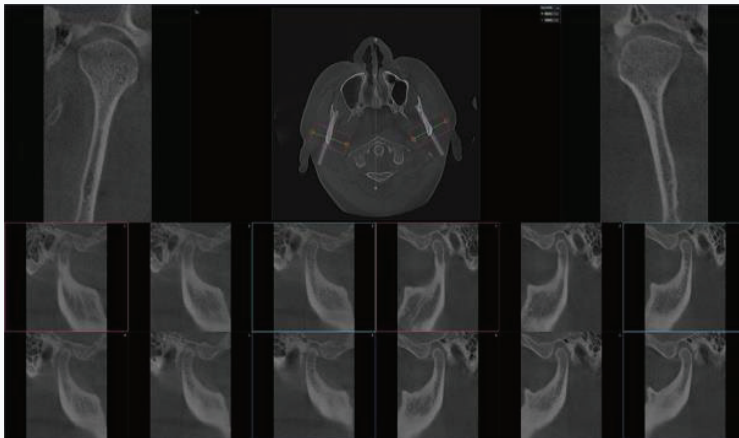
The whole area of head and neck could be diagnosed. (Field of View : 16x18cm Stitching)

# Panorama

A clear image with minimized blurring of anterior teeth makes an accurate diagnosis possible

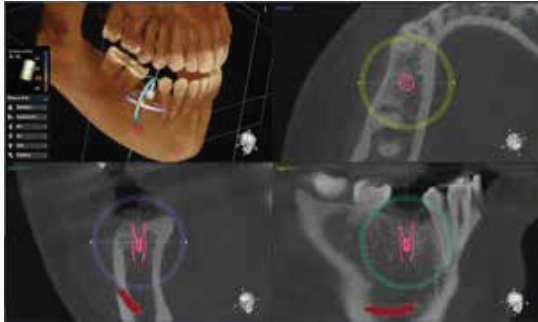


## TMJ



# Efficient 3D Volumes For Everyone

Delivered with the smart Dentium AI software, bright CT is an essential tool for treatment planning and post-procedure follow-up

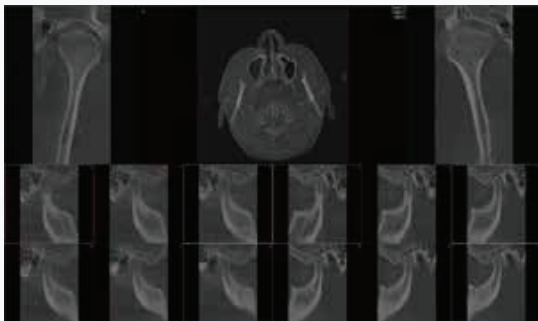
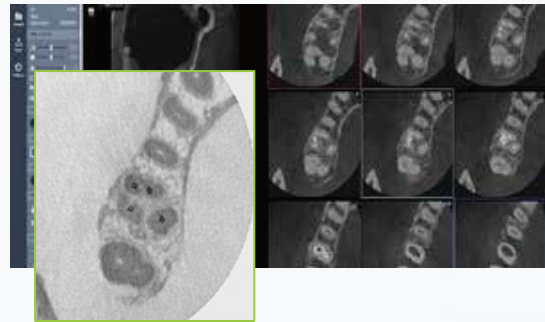


## Implant Planning

Dentium AI automatically detects the position of the missing teeth and sets the initial position of fixture and crown to minimize implant planning

## Endodontics

Endo mode provides with a maximum resolution of 80µm. Invert (Positive/Negative) diagnostic mode helps identify more accurate images.

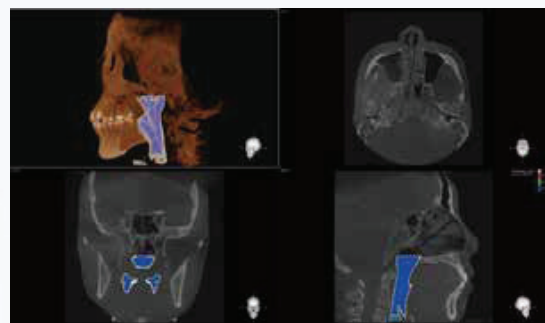


## TMJ

Symmetry view provides a cross-sectional image of the temporomandibular joint area for bilateral TMJ diagnosis.

## Airway Analysis

Airway module allows users to easily segment the airway in just a few clicks.



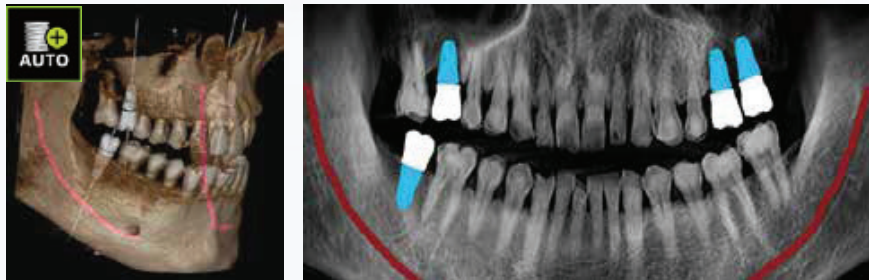


# AI-Assisted Implant Planning

Delivered with the smart Dentium AI software, bright CT is an essential tool for treatment planning and post-procedure follow-up.

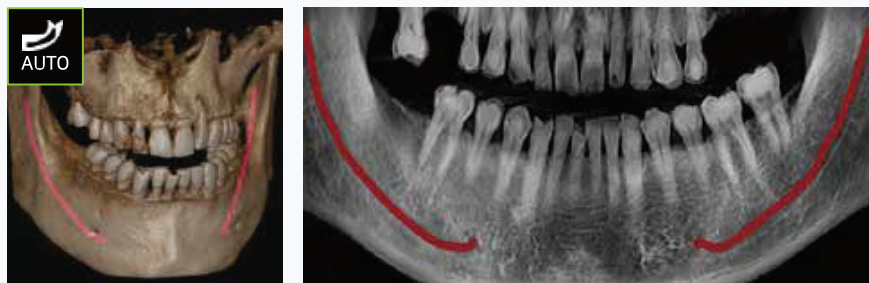
## Fixture/Crown

Dentium AI automatically detects the position of the missing teeth and sets the initial position of fixture and crown to minimize implant planning.



## Nerve

Search the inferior alveolar nerve canal within 15 seconds. Dentium AI provides more accurate and reliable diagnosis.



## Arch

Dentium AI algorithm automatically generates arch line in just a few seconds with accurate rate.

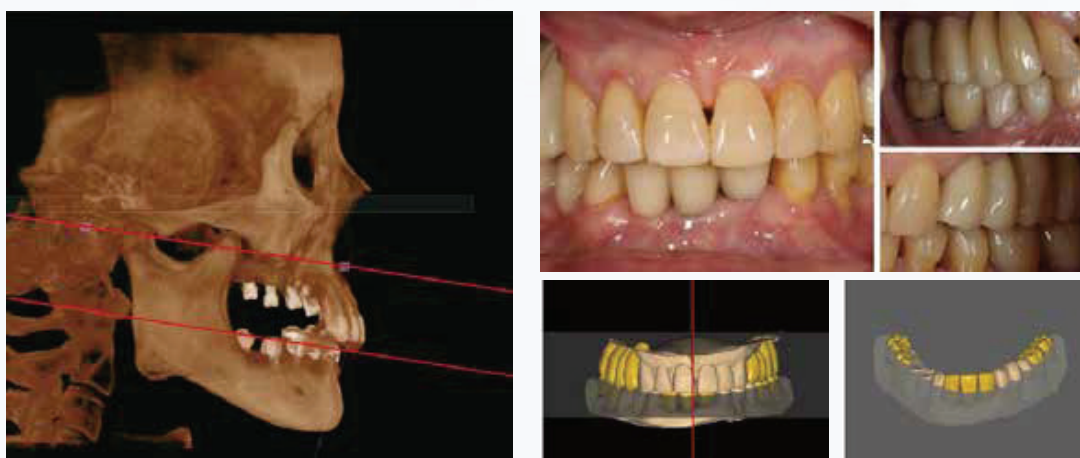


# AI-Powered CBCT Applications

Dentium-AI automatically detects the landmarks on the scanned image for orthodontic treatment.

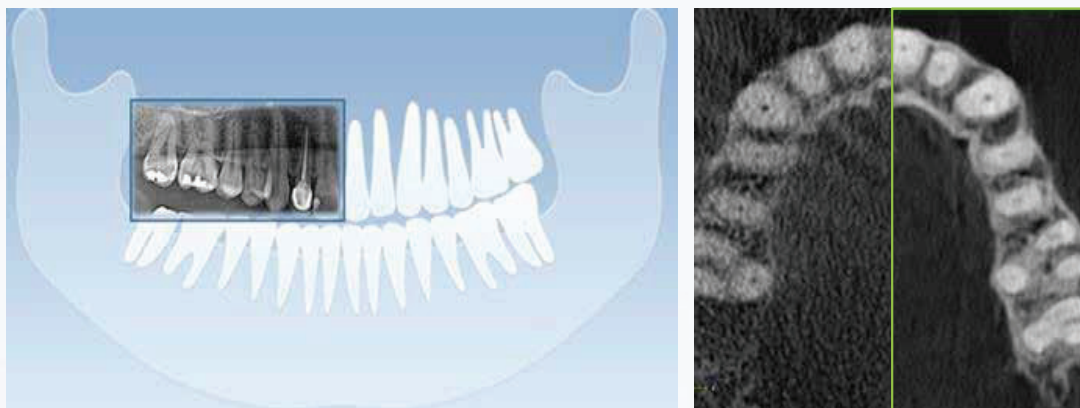
## AI Occlusal Plane

bright CT helps discover occlusal plane for an edentulous patient as an optimal reference. This feature comes with the rainbow 3D Viewer with no additional cost.



## De-Noising Algorithm

Noise-free images without losing valuable details and allows lower exposure values by reducing noise. This feature improves image quality when using small voxel sizes (e.g. in the endodontic imaging mode).

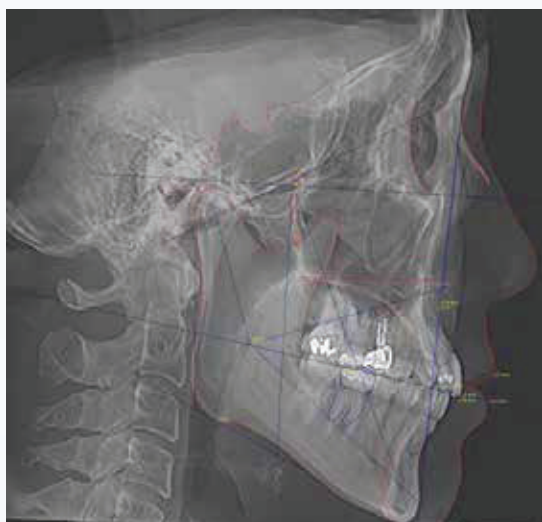
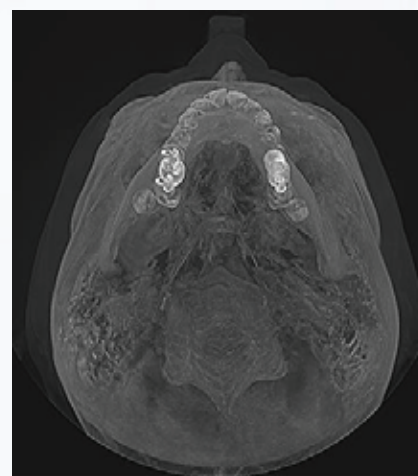
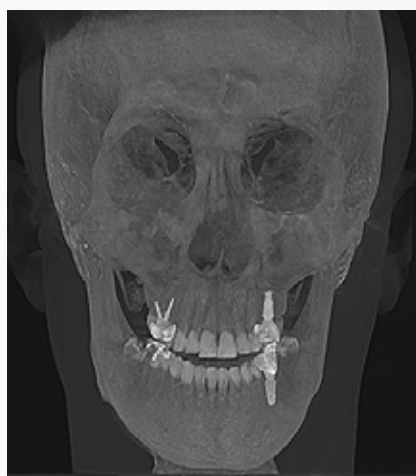


# The New Era of Cephalometric

Innovative image processing algorithm allow you can capture and analyze precise cephalometric images quickly and accurately.

## Virtual Ceph

bright CT enables acquiring cephalometric images without cephalometric module with Virtual Ceph function.



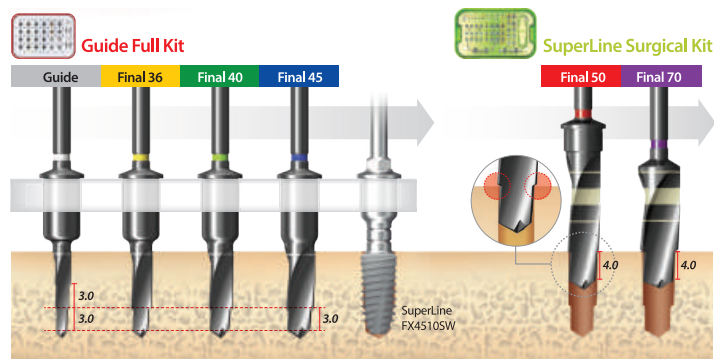
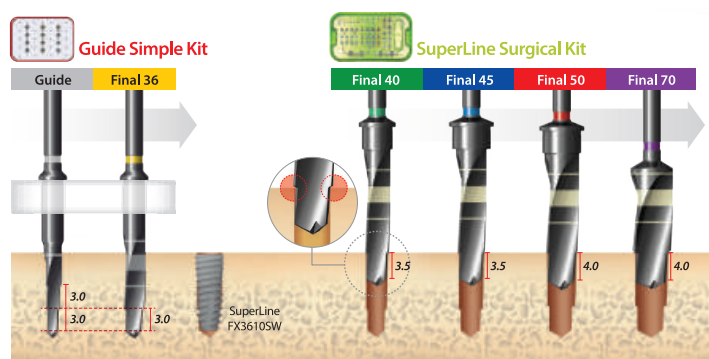


# *Simple & Easy* Digital Guide Software

Easy for Everyone.



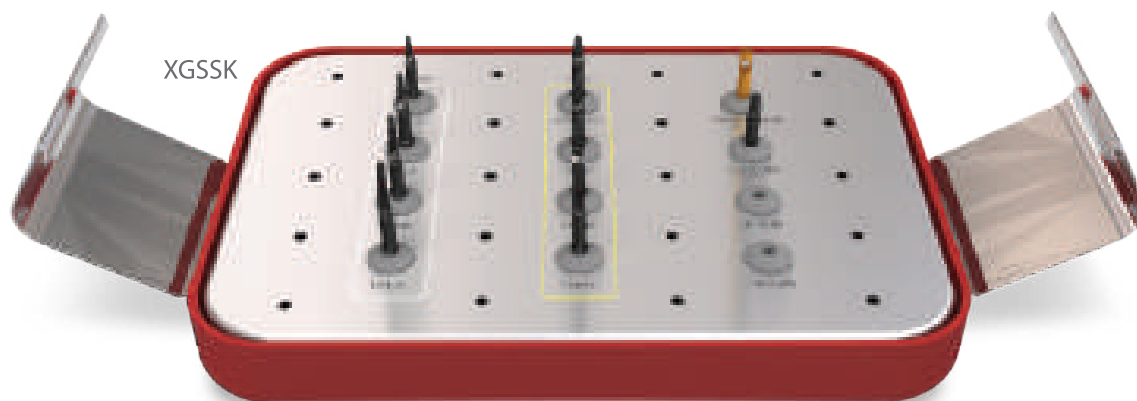
# Dentium Guided Surgery



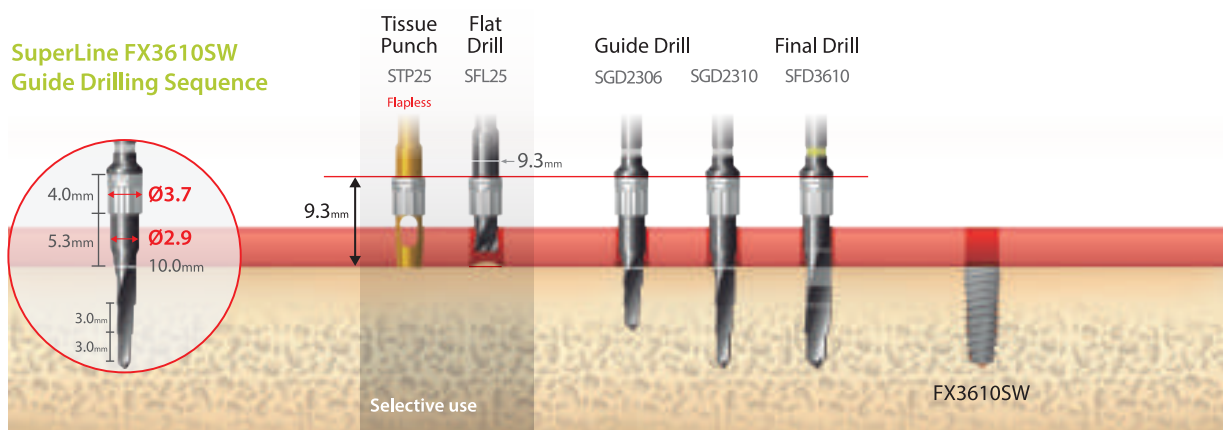
*Simple* Path & Depth Guided

# Simple Kit

- For Ø36 Fixture
- Ø3.0 Narrow Sleeve



## SuperLine FX3610SW Guide Drilling Sequence



### Guide Drill



### FX 36 Final Drill



### Tissue Punch



### Flat Drill



### Ti-Sleeve





W I R E L E S S

# iCT<sup>®</sup> motor



iCT<sup>®</sup> motor

Total Catalogue 50

# Wireless System

## The Freedom of a Cordless System

Convenience you have never experienced before

Cordless main unit system and foot switch

Controller system



## Cordless Main Unit System

- The World's first and most convenient cordless main unit system
- Easily operated with three pedal switches and has an intuitive user interface
- Easy mobility and installation since it is cord-free





2000 rpm  
70 Ncm

High Level of Precision



Optic Micro-Motor



Cord-Free

# Cordless Foot Switch System

- It is easy to use without a mess of cables
- The safety double-push pedal helps to improve reliability and stability
- Intuitive operation switch has enhanced ease of use through step change and reverse rotation



## Optic Micro-Motor

- We assure ergonomic comfort, high durability and high level of precision
- Optic micro-motor helps to simplify procedures



**iCT**motor

Total Catalogue 52

# The Trust

Implant Stability Measuring Device

---

- ※ Any Angle
- ※ Disposable Vinyl Cap
- ※ Similar Osstell Number



# Features



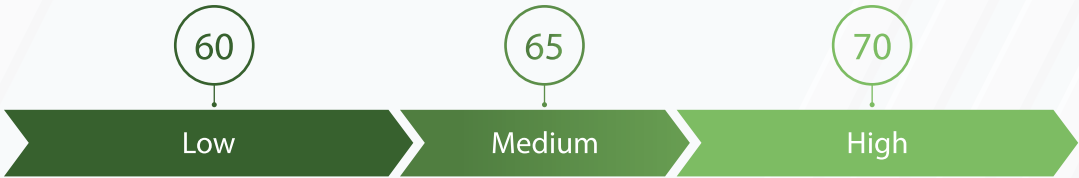
Easy operation



Quick check result  
(7 times in 3 seconds)



LCD window



Indication	Implant Risk Monitor ISV	Full Splint IL	Partial	Single
Surgical protocol		2-Stage	1 or 2-Stage	1-Stage
Restorative protocol		Traditional	Early	Immediate



# Durability and Style

---

Designed to provide ultimate comfort, innovation, and style for both patients and professionals. Its sleek, ergonomic design ensures that every patient experiences unparalleled relaxation, while dental practitioners benefit from ease of operation.

**bright** Chair **2**

Total Catalogue 55

## Treatment Alone

Solo treatment is possible through the suction cradle and auxiliary lighting.



## Stable Structure

Floor mount type improves durability & efficiently operates in a complex office space.



Detachable Spittoon



Replaceable  
Instrument Holder  
\*Oval Type



Cleaning System  
for Water Pipe  
\*Option



## Dental Light

LED Dental light provides semi permanent service life & eye-friendly brightness.



# XRAY

*Portable & Suitable*



**bright**

Total Catalogue 57 Catalogue 50

# Product Specifications



## Patient Type

Adult, Child

## Tooth Type

Anterior Tooth, Canine Tooth  
Molar Tooth & Premolar Tooth

## Irradiation Time

Time & Angle can be controlled

※ Available for taking picture of 200 X-ray photographs with 2 hours of charging

### Product Information

Size: 304.3 X 160 X 262.5 (mm)

Weight: 1.6kg (Main body)

Battery Specifications: 11.1V 1,500mAh

## Light Weight Clear Image



Hand Strap



Wrist Rest



Post-Scatter  
Shielding Glass



Stand

**bright**



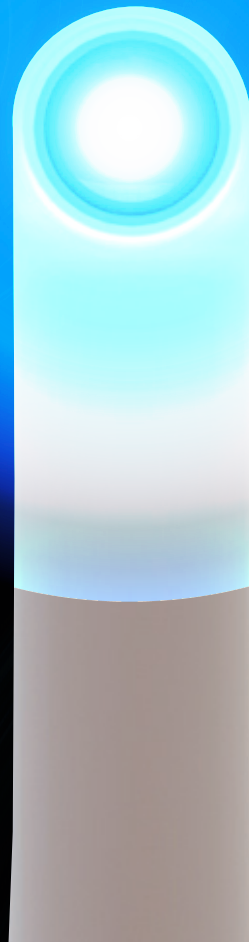
# Bluemoon

Curing Light

3 sec

Incomparable to  
anything

Dual wave LED, Glass Lens, 1 Button, All 4 modes



## Features

**3 sec**



### Low access

Low access  
angle head



### 360 Degree Rotation

Light Probe  
360 Degree Rotation



### Glass Lens

Scratch Resistant  
Glass Lens



**99g**

Light Weight



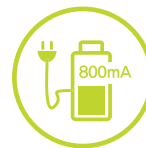
**360~520nm**

Wide Wavelengths  
360~520nm



**3 000mW/cm<sup>2</sup>**

Maximum Output  
3,000mW/cm<sup>2</sup>



**800mA Battery**

Rechargeable  
battery



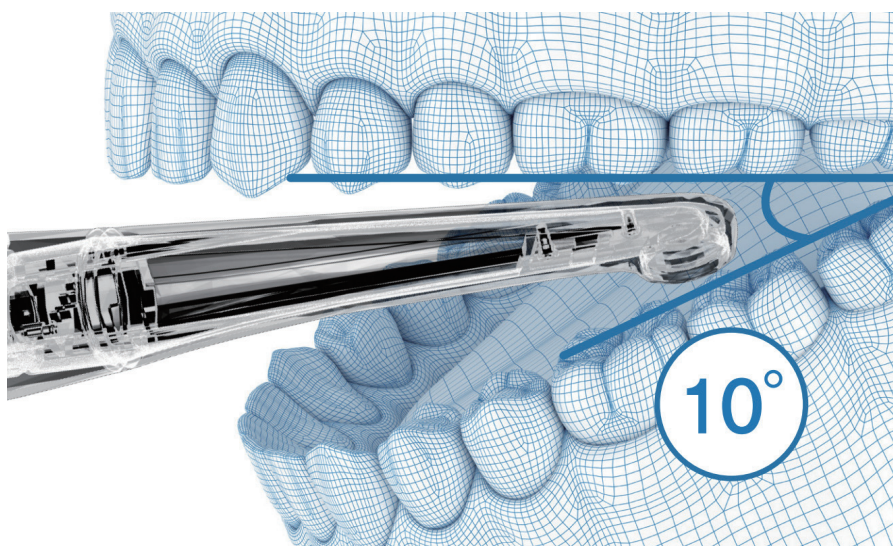
**Quick Charge**

Only 1 Hour to  
Full Charge

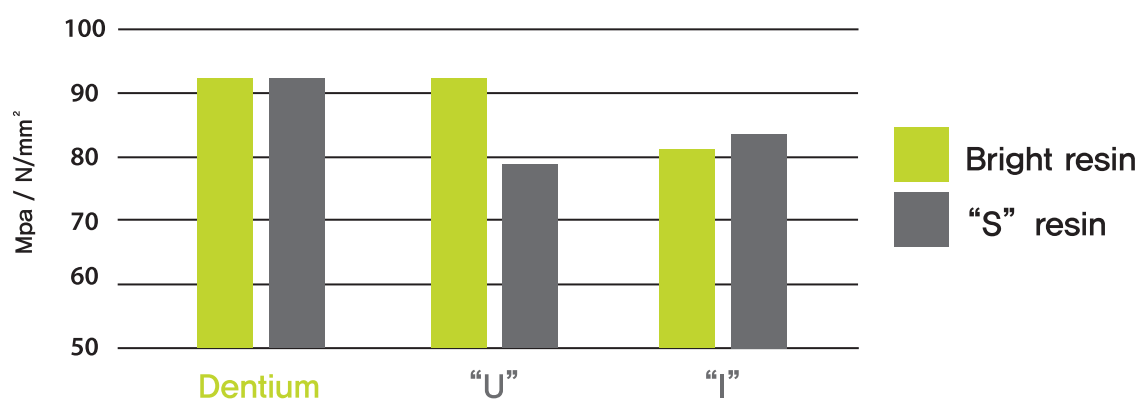
## 4 modes for simple

Mode	Time(s)	Intensity(mW/cm <sup>2</sup> ±10%)
<b>HYPER</b>	<b>3</b>	<b>3,000</b>
<b>TURBO</b>	<b>5</b>	<b>2,500</b>
<b>LOW</b>	<b>10</b>	<b>1,200</b>
<b>S. Start</b>	<b>10</b>	<b>0~2,000</b>

## | Easy accessibility



## | Polymerization Strength



## | Specification

Product (Light Probe & Battery)	Operating voltage	3.7V
	Wavelength range	380~520nm
	Dimensions	App. 240 x 27 x 27
	Weight	99g
Charger	Operating voltage	5V
	Dimensions	App. 102 x 85 x 44
	Weight	128g
Battery	Type	Lithium ion battery
	Voltage	DC 3.7V
	Dimensions	App. 14.5 x 52.7
Disposable cover	Quantity	App. 100 sheets (based on weight)
	Raw material	Polyethylene



# PAINLESS

It helps to disperse the texture

- 360° rotating tip for convenience.
- Compact design & good pen grip.
- Easily replaceable battery.

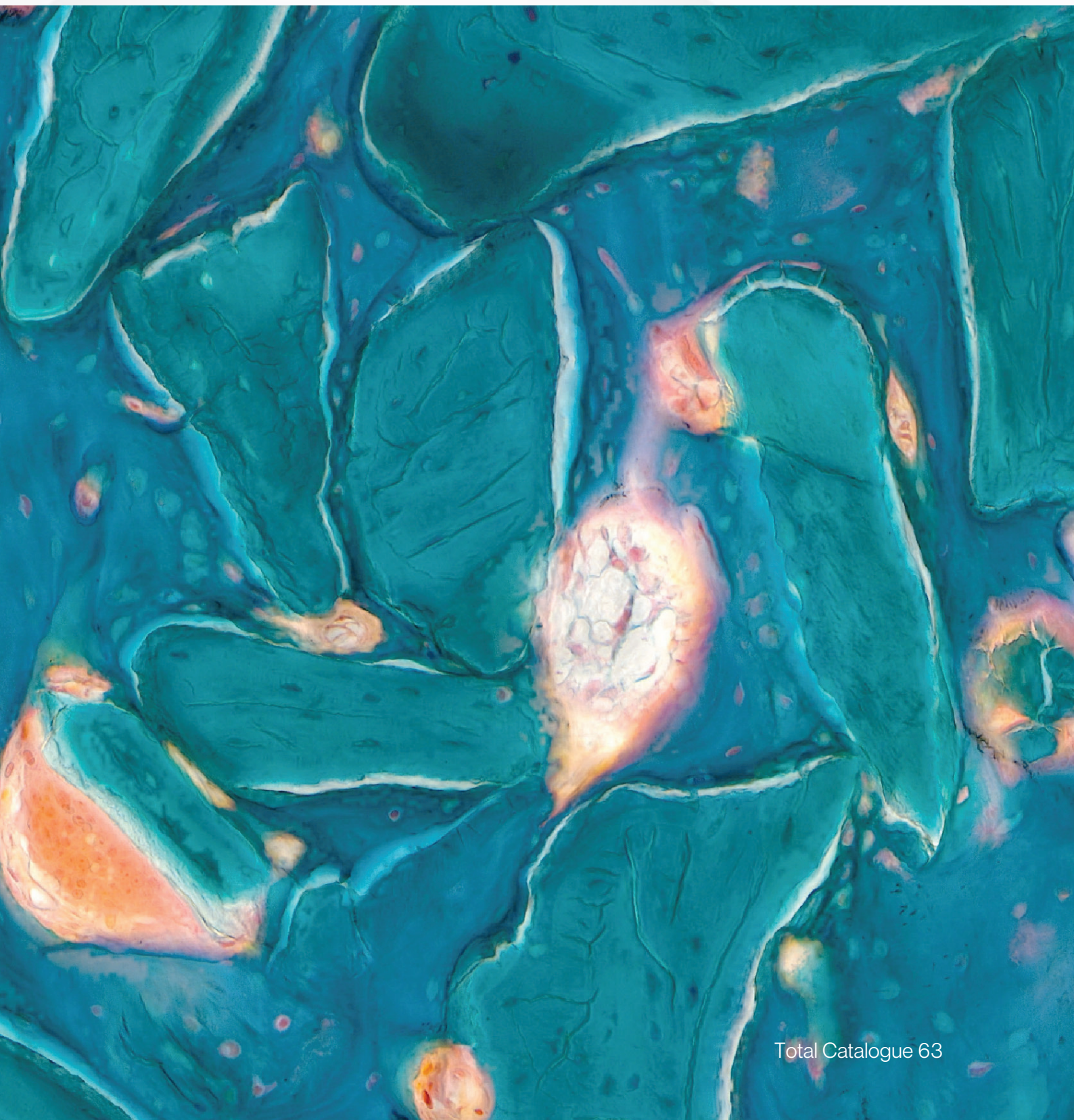




Dentium

# Regeneration

Bone Grafting & Soft Tissue Management



Total Catalogue 63



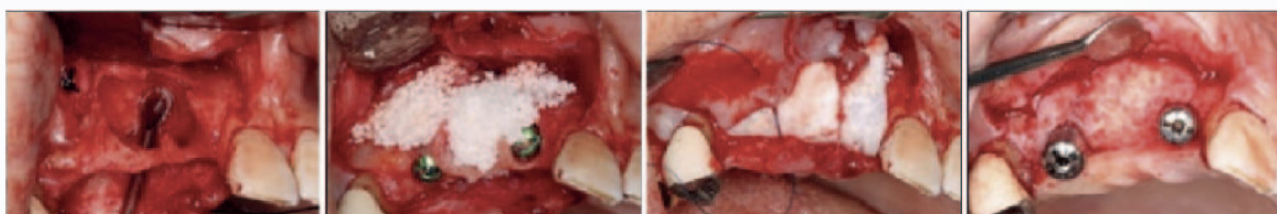
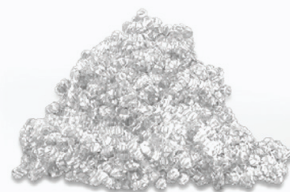
# OSTEON™ III

## Characteristics

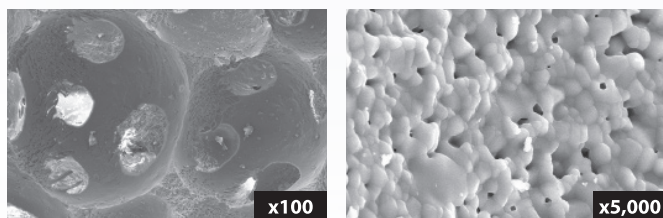
- Easy manipulation and excellent wettability
- Osteoconductive synthetic bone graft
- Larger surface area & higher porosity than OSTEON I & II  
(Highly inter-connected structure between macro/micro pores)

## Applications

- Periodontal Defect
- Ridge Augmentation
- Extraction Site
- Cystic Cavities
- Sinus Lift



## Microstructure



Macropore

Micropore

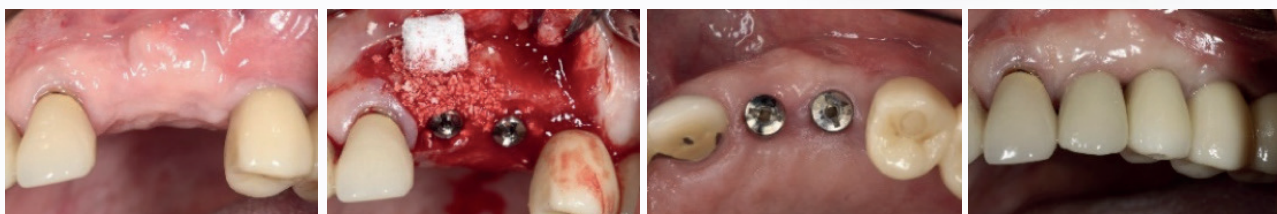
# OSTEON™ 3 Collagen

## Characteristics

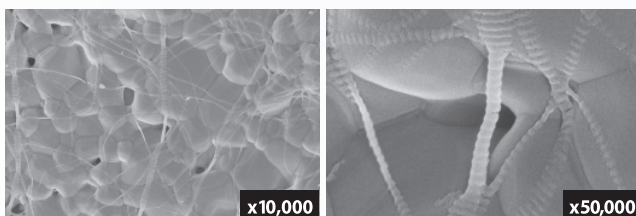
- Bone void filler composed of OSTEON 3 and Type I Collagen
- Moldable to various defect shape after being wet
- Easy handling, thus allowing reduced chair time

## Applications

- Simple Grafting (Volume up)
- Ridge Augmentation
- Extraction Socket Grafting
- Sinus Lift (Crestal Approach)



## Microstructure



# OSTEON™ Xeno

## Characteristics

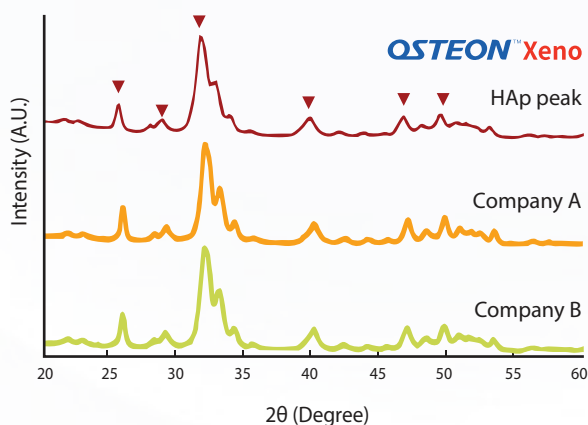
- Natural bovine bone substitute similar to human bone
- Highly interconnected macro/micro-pores
- Complete removal of organic substances
- Easy handling and excellent wettability

## Applications

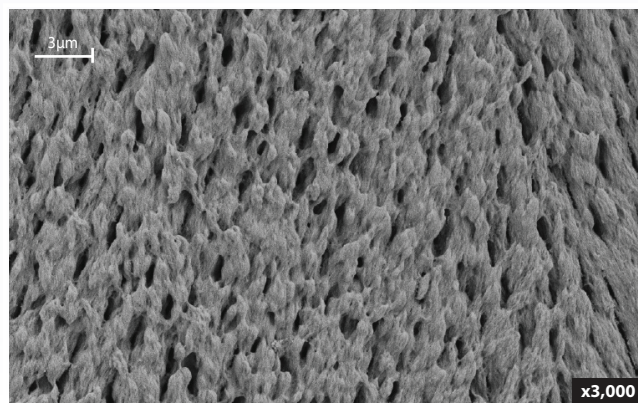
- Alveolar Ridge Preservation
- Extraction Site & Osteotomy
- Horizontal & Vertical Bone Augmentation
- Periodontal Defect



### XRD spectra



### Microstructure



Micropore



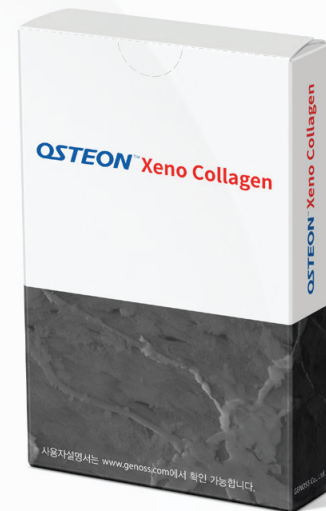
# OSTEON™ Xeno Collagen

## Characteristics

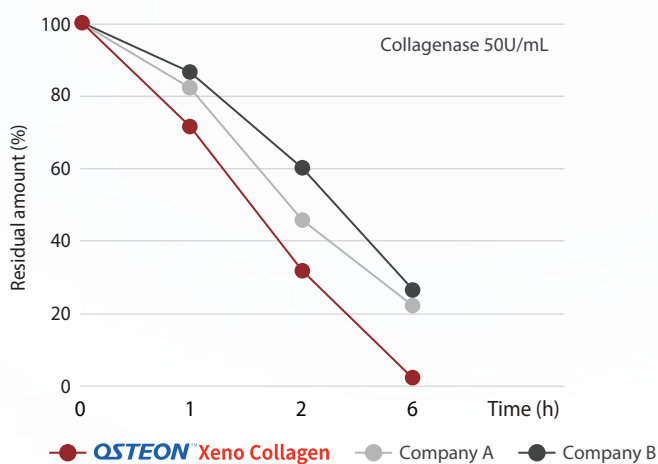
- Bone void filler composed of OSTEON Xeno and Type I Collagen
- Easy handling and reduced surgical chair time
- Collagen provides treatment convenience and is absorbed within 1-2 weeks.

## Applications

- Guided Bone Regeneration
- Contour Augmentation
- Alveolar Ridge Preservation
- Sinus Lift



### Collagen Degradation Rate



### Easy handling



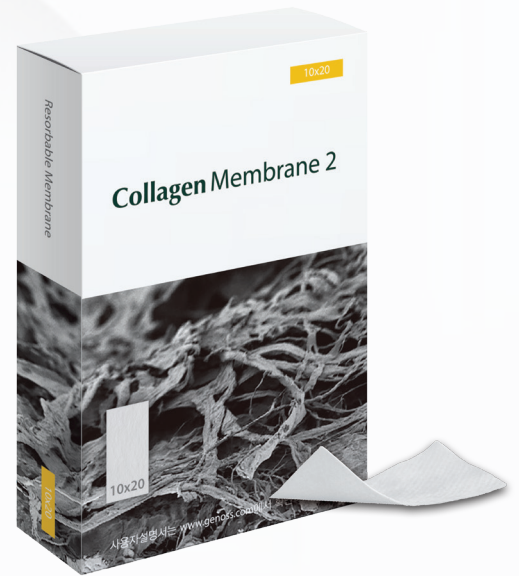
# Collagen Membrane 2

## Characteristics

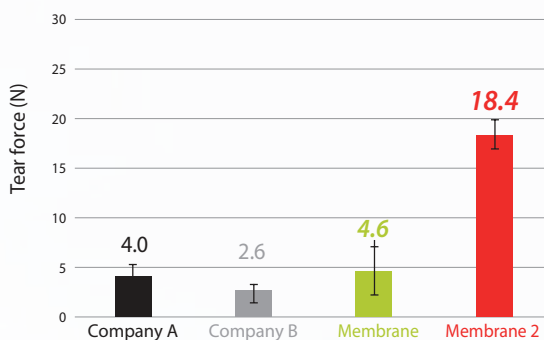
- Highly pure Type I Collagen
- Resorbable barrier membrane lasting for 4 months
- Multi-layered structure
- Easy handling (Soft type)

## Applications

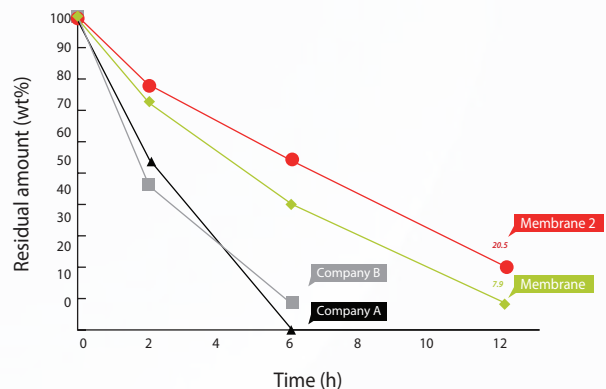
- Guided Bone Regeneration
- Ridge Augmentation
- Extraction Sites (Implant Preparation / Placement)
- Burrito Technique (Pin Application)



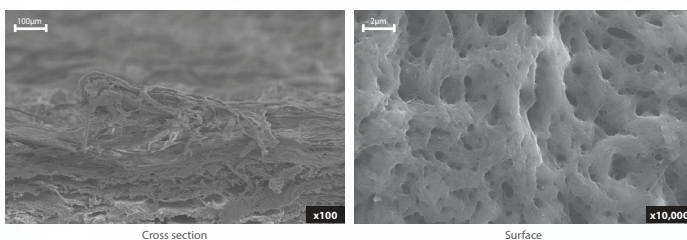
### Tear force



### In Vitro Degradation



### Microstructure



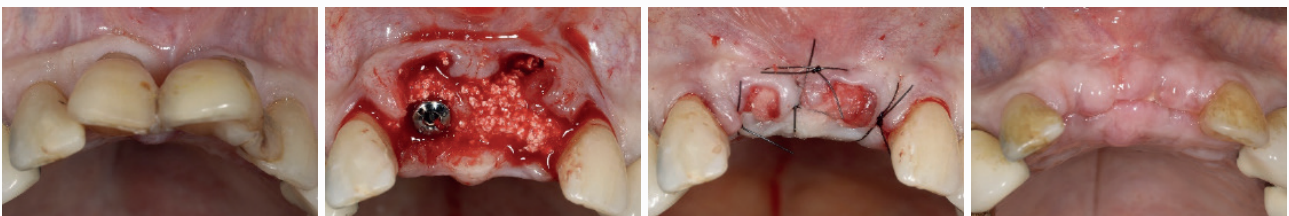
# Collagen Graft 2

## Characteristics

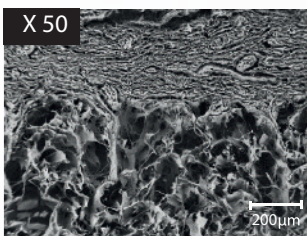
- Highly pure Type I Collagen
- Bilayer structure: Dense + Porous Layer
- Faster Soft Tissue Healing by Epithelization

## Applications

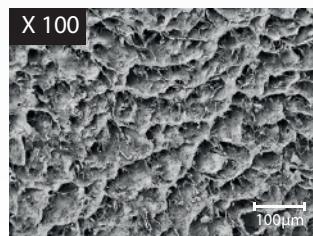
- Ridge Preservation (Open Healing)
- Keratinized Tissue Augmentation
- Recovery of Keratinized Mucosa
- FGG Alternative
- Root Coverage



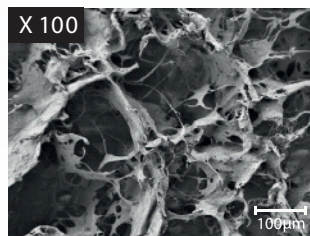
## Microstructure



Cross section



Dense Layer



Porous Layer

# Bright Resin



# Bright

## Bright Bond Universal

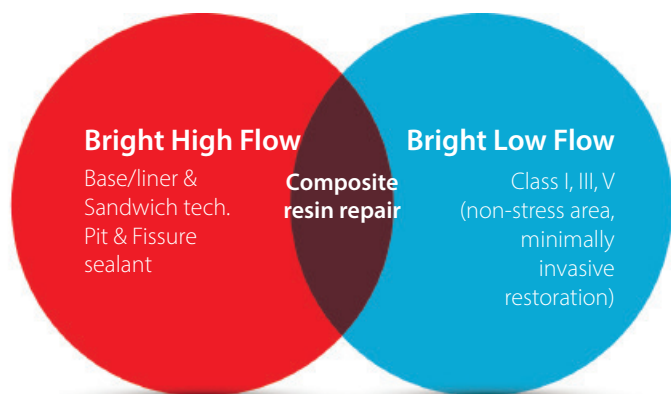
One-step light-curing bonding system with the functions of etching, primer, and bonding resin in a single component with the 7th generation universal adhesive

## Bright High/Low Flow

It is composed of two types of viscosity, so it is easy to apply to various tooth restorations

## Bright Uniaversal Etchant (Phosphoric acid 35%)

Helps to improve adhesion strength by effectively removing the enamel smear layer





# Bright

## Bright Core

Binary cured core build-up resin with similar hardness and curing depth to natural teeth

## Bright Primer

Contains MDP that additionally improves the adhesion of resin cement through chemical bonding with indirect restorations (zirconia, base, metal)

## Resin Cement

As a self-adhesive dual polymerization resin cement, it has excellent adhesion to restorations made of various materials (zirconia, lithium disilicate, metal).



# Bright



## Ortho Bright

Excellent adhesion to the bracket and reduced working time by omitting the primer treatment

## Bright Impress

As an impression material that is hydrophilic, it helps to obtain an accurate impression with optimized flow and physical properties.



# Bright



## Bright Endo MTA Capping

Inducing antibacterial effect and hard tissue formation through continuous release of calcium ions for light-curing base/liner for pulp protection

## Bright Endo MTA Sealer

MTA-based root canal filler (hydraulic), antibacterial and residual bacterial growth inhibitory effect by calcium hydroxide



### **Dentium Headquarters**

76, Changryong-daero 256beon-gil, Yeongtong-gu,  
Suwon, Gyeonggi-do, 1st floor, B102

### **ICT FZCO**

Office no. 2002 - Building 7W A Block  
Dubai Airport Free Zone - Dubai

### **BMS TK**

Harbiye Mah. Cumhuriyet Cad. No:40  
K:4 D:41 Sisli/Istanbul